



**ELECTRONIC COPY**

## LABORATORY GROWN DIAMOND REPORT

LG764663463  
Report verification at [igi.org](https://igi.org)

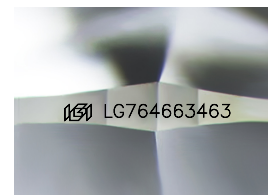
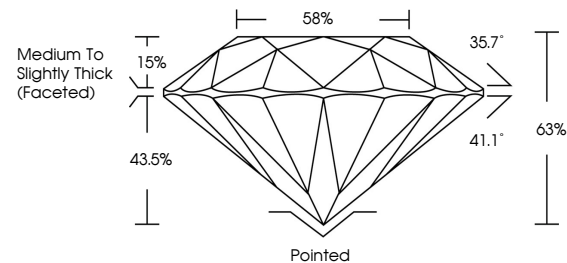
January 15, 2026	
IGI Report Number	LG764663463
Description	LABORATORY GROWN DIAMOND
Shape and Cutting Style	ROUND BRILLIANT
Measurements	8.56 - 8.62 X 5.42 MM
<b>GRADING RESULTS</b>	
Carat Weight	2.52 CARATS
Color Grade	E
Clarity Grade	VVS 2
Cut Grade	EXCELLENT

### ADDITIONAL GRADING INFORMATION

Polish	EXCELLENT
Symmetry	EXCELLENT
Fluorescence	NONE
Inscription(s)	 LG764663463

Comments: This Laboratory Grown Diamond was created by Chemical Vapor Deposition (CVD) growth process.  
Type IIa

## PROPORTIONS



Sample Image Used

## COLOR

D E F G H I J Faint Very Light Light

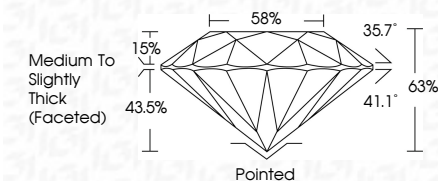
## CLARITY

FL	IF	VVS <sup>1-2</sup>	VS <sup>1-2</sup>	SI <sup>1-2</sup>	I <sup>1-3</sup>
Flawless	Internally Flawless	Very Very Slightly Included	Very Slightly Included	Slightly Included	Included

## LABORATORY GROWN DIAMOND REPORT



January 15, 2026	
IGI Report Number	LG764663463
Description	LABORATORY GROWN DIAMOND
Shape and Cutting Style	ROUND BRILLIANT
Measurements	8.56 - 8.62 X 5.42 MM
GRADING RESULTS	
Carat Weight	2.52 CARATS
Color Grade	E
Clarity Grade	VVS 2
Cut Grade	EXCELLENT



### ADDITIONAL GRADING INFORMATION

Polish	EXCELLENT
Symmetry	EXCELLENT
Fluorescence	NONE
Inscription(s)	 LG764663463
<p>Comments: This Laboratory Grown Diamond was created by Chemical Vapor Deposition (CVD) growth process.</p> <p>Type IIa</p>	



© IGI 2020, International Gemological Institute

FD - 10 20



THIS DOCUMENT WAS PRODUCED WITH THE FOLLOWING SECURITY MEASURES: SPECIAL DOCUMENT PAPER, INK SCREENS, WATERMARK, BACKGROUND DESIGNS, HOLOGRAM AND OTHER SECURITY FEATURES NOT LISTED AND DO EXCEED DOCUMENT SECURITY INDUSTRY GUIDELINES

**www.igi.org**

January 18, 2026
Gf Report No LG76469463
<b>ROUND BRILLIANT</b>
<b>5.6 - 5.6 x 5.42 MM</b>
Carat Weight Color Grade <b>E</b>
<b>2.62 CARATS</b>
<b>VVS 2</b>
<b>EXCELLENT</b>
<b>65%</b>
<b>85%</b>
<b>Medium to Slightly Thick Faceted)</b>
Poished Excellent Excellent None None #Gf LG76469463

Comments:

This Laboratory Grown Diamond was created by Chemical Vapor Deposition (CVD) growth process.

Type IId