



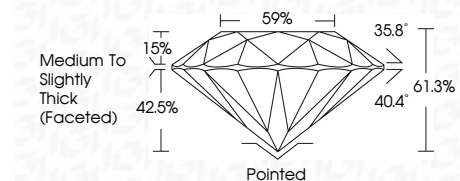
**ELECTRONIC COPY**

LG764660824  
Report verification at igi.org



March 16, 2026  
IGI Report Number **LG764660824**  
Description **LABORATORY GROWN DIAMOND**  
Shape and Cutting Style **ROUND BRILLIANT**  
Measurements **8.04 - 8.09 X 4.94 MM**

**GRADING RESULTS**  
Carat Weight **2.01 CARATS**  
Color Grade **E**  
Clarity Grade **VVS 2**  
Cut Grade **IDEAL**



**ADDITIONAL GRADING INFORMATION**  
Polish **EXCELLENT**  
Symmetry **EXCELLENT**  
Fluorescence **NONE**  
Inscription(s) **IGI LG764660824**  
Comments: This Laboratory Grown Diamond was created by Chemical Vapor Deposition (CVD) growth process. Type IIa



March 16, 2026  
IGI Report No LG764660824  
**ROUND BRILLIANT**  
8.04 - 8.09 X 4.94 MM  
2.01 CARATS  
E  
VVS 2  
IDEAL  
61.3%  
59%  
Medium To Slightly Thick (Faceted)  
Pointed  
EXCELLENT  
EXCELLENT  
NONE  
IGI LG764660824  
Comments: This Laboratory Grown Diamond was created by Chemical Vapor Deposition (CVD) growth process. Type IIa

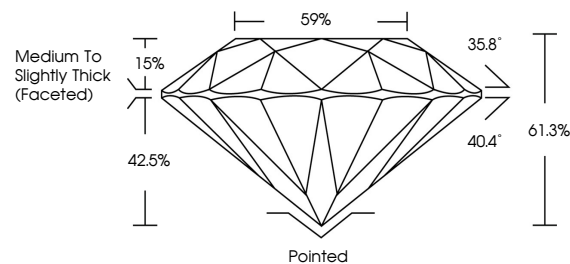
March 16, 2026  
IGI Report Number **LG764660824**  
Description **LABORATORY GROWN DIAMOND**  
Shape and Cutting Style **ROUND BRILLIANT**  
Measurements **8.04 - 8.09 X 4.94 MM**

**GRADING RESULTS**  
Carat Weight **2.01 CARATS**  
Color Grade **E**  
Clarity Grade **VVS 2**  
Cut Grade **IDEAL**

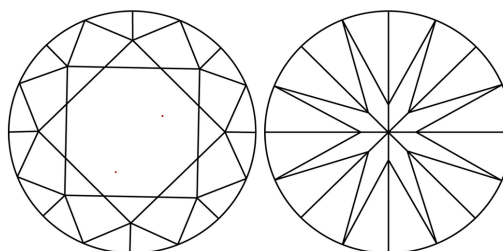
**ADDITIONAL GRADING INFORMATION**  
Polish **EXCELLENT**  
Symmetry **EXCELLENT**  
Fluorescence **NONE**  
Inscription(s) **IGI LG764660824**

Comments: This Laboratory Grown Diamond was created by Chemical Vapor Deposition (CVD) growth process. Type IIa

**PROPORTIONS**

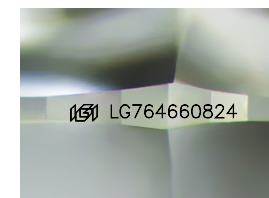


**CLARITY CHARACTERISTICS**



**KEY TO SYMBOLS**

Red symbols indicate internal characteristics.  
Green symbols indicate external characteristics.



Sample Image Used

**COLOR**

D E F G H I J Faint Very Light Light

**CLARITY**

FL	IF	VVS <sup>1-2</sup>	VS <sup>1-2</sup>	SI <sup>1-2</sup>	I <sup>1-3</sup>
Flawless	Internally Flawless	Very Very Slightly Included	Very Slightly Included	Slightly Included	Included

