



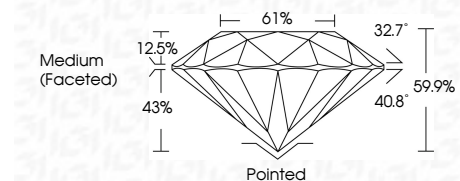
ELECTRONIC COPY

LG764660820
Report verification at igi.org



March 14, 2026
IGI Report Number **LG764660820**
Description **LABORATORY GROWN DIAMOND**
Shape and Cutting Style **ROUND BRILLIANT**
Measurements **8.14 - 8.17 X 4.89 MM**

GRADING RESULTS
Carat Weight **2.01 CARATS**
Color Grade **E**
Clarity Grade **VVS 2**
Cut Grade **EXCELLENT**



ADDITIONAL GRADING INFORMATION
Polish **EXCELLENT**
Symmetry **EXCELLENT**
Fluorescence **NONE**
Inscription(s) **(IGI) LG764660820**
Comments: This Laboratory Grown Diamond was created by Chemical Vapor Deposition (CVD) growth process. Type IIa



March 14, 2026
IGI Report No LG764660820
ROUND BRILLIANT
8.14 - 8.17 X 4.89 MM
2.01 CARATS
E
VVS 2
EXCELLENT
61%
61%
Medium (Faceted)
Pointed
EXCELLENT
EXCELLENT
NONE
NONE
(IGI) LG764660820
Comments: This Laboratory Grown Diamond was created by Chemical Vapor Deposition (CVD) growth process. Type IIa

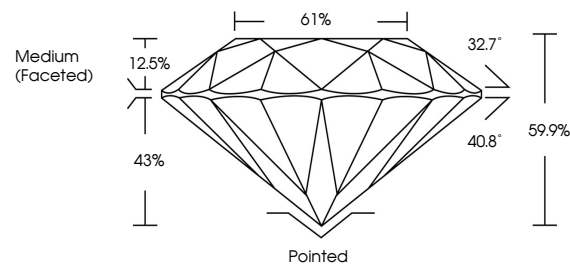
March 14, 2026
IGI Report Number **LG764660820**
Description **LABORATORY GROWN DIAMOND**
Shape and Cutting Style **ROUND BRILLIANT**
Measurements **8.14 - 8.17 X 4.89 MM**

GRADING RESULTS
Carat Weight **2.01 CARATS**
Color Grade **E**
Clarity Grade **VVS 2**
Cut Grade **EXCELLENT**

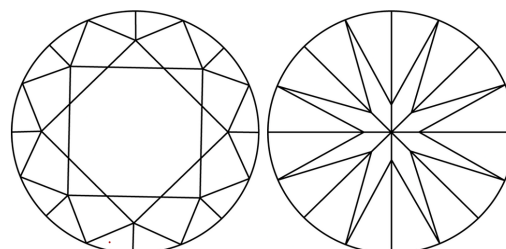
ADDITIONAL GRADING INFORMATION
Polish **EXCELLENT**
Symmetry **EXCELLENT**
Fluorescence **NONE**
Inscription(s) **(IGI) LG764660820**

Comments: This Laboratory Grown Diamond was created by Chemical Vapor Deposition (CVD) growth process. Type IIa

PROPORTIONS

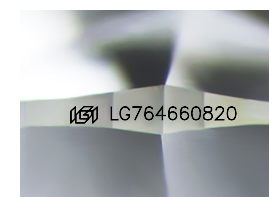


CLARITY CHARACTERISTICS



KEY TO SYMBOLS

Red symbols indicate internal characteristics.
Green symbols indicate external characteristics.



Sample Image Used

COLOR

D E F G H I J Faint Very Light Light

CLARITY

FL	IF	VVS ¹⁻²	VS ¹⁻²	SI ¹⁻²	I ¹⁻³
Flawless	Internally Flawless	Very Very Slightly Included	Very Slightly Included	Slightly Included	Included

