



ELECTRONIC COPY

LG764660751
Report verification at igi.org



March 6, 2026

IGI Report Number **LG764660751**

Description **LABORATORY GROWN DIAMOND**

Shape and Cutting Style **CUT CORNERED
RECTANGULAR MODIFIED
BRILLIANT**

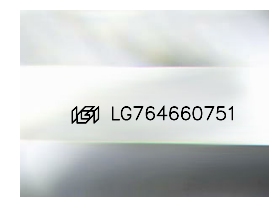
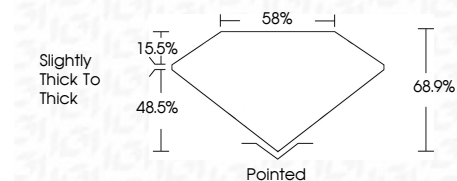
Measurements **10.35 X 7.92 X 5.46 MM**

GRADING RESULTS

Carat Weight **4.01 CARATS**

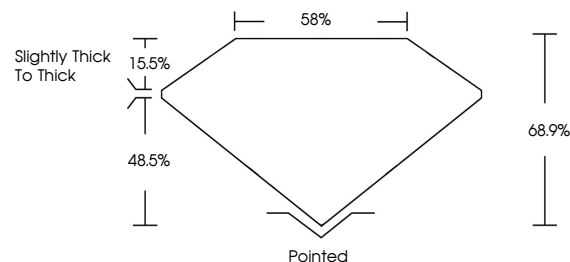
Color Grade **E**

Clarity Grade **FLAWLESS**

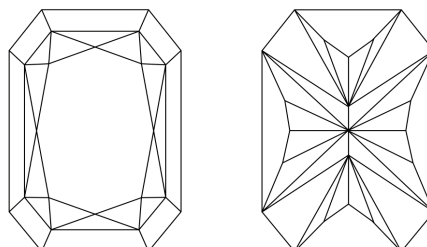


Sample Image Used

PROPORTIONS



CLARITY CHARACTERISTICS



KEY TO SYMBOLS

Red symbols indicate internal characteristics.
Green symbols indicate external characteristics.

COLOR

D E F G H I J Faint Very Light Light

CLARITY

FL	IF	VS ¹⁻²	VS ¹⁻²	SI ¹⁻²	I ¹⁻³
Flawless	Internally Flawless	Very Very Slightly Included	Very Slightly Included	Slightly Included	Included

ADDITIONAL GRADING INFORMATION

Polish **EXCELLENT**

Symmetry **EXCELLENT**

Fluorescence **NONE**

Inscription(s) **IGI LG764660751**

Comments: This Laboratory Grown Diamond was created by Chemical Vapor Deposition (CVD) growth process. Type IIa



IGI



March 6, 2026
IGI Report No LG764660751
CUT CORNERED RECT. MODIFIED BRILLIANT
10.35 X 7.92 X 5.46 MM
4.01 CARATS
E
FLAWLESS
68.9%
85%
Slightly thick to thick
Pointed
EXCELLENT
EXCELLENT
NONE
IGI LG764660751
Comments: This Laboratory Grown Diamond was created by Chemical Vapor Deposition (CVD) growth process. Type IIa