



ELECTRONIC COPY

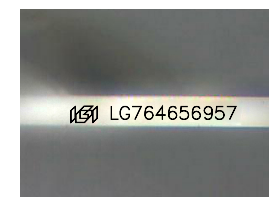
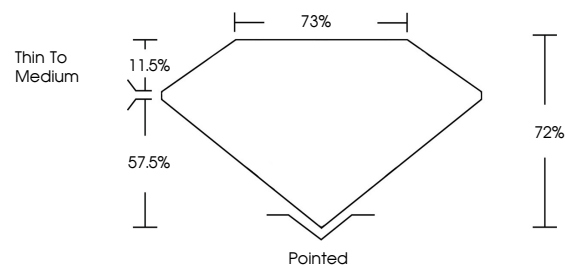
LG764656957
Report verification at igi.org



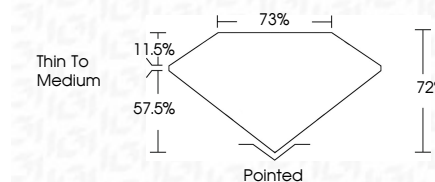
January 13, 2026
IGI Report Number **LG764656957**
Description **LABORATORY GROWN DIAMOND**
Shape and Cutting Style **PRINCESS CUT**
Measurements **6.48 X 6.44 X 4.64 MM**
GRADING RESULTS
Carat Weight **1.72 CARAT**
Color Grade **H**
Clarity Grade **VVS 2**

January 13, 2026
IGI Report Number **LG764656957**
Description **LABORATORY GROWN DIAMOND**
Shape and Cutting Style **PRINCESS CUT**
Measurements **6.48 X 6.44 X 4.64 MM**
GRADING RESULTS
Carat Weight **1.72 CARAT**
Color Grade **H**
Clarity Grade **VVS 2**

PROPORTIONS



Sample Image Used



ADDITIONAL GRADING INFORMATION

Polish **EXCELLENT**
Symmetry **EXCELLENT**
Fluorescence **NONE**
Inscription(s) **IGI LG764656957**

Comments: This Laboratory Grown Diamond was created by Chemical Vapor Deposition (CVD) growth process. Type IIa

ADDITIONAL GRADING INFORMATION

Polish **EXCELLENT**
Symmetry **EXCELLENT**
Fluorescence **NONE**
Inscription(s) **IGI LG764656957**
Comments: This Laboratory Grown Diamond was created by Chemical Vapor Deposition (CVD) growth process. Type IIa

COLOR

D E F G H I J Faint Very Light Light

CLARITY

FL	IF	VVS ¹⁻²	VS ¹⁻²	SI ¹⁻²	I ¹⁻³
Flawless	Internally Flawless	Very Very Slightly Included	Very Slightly Included	Slightly Included	Included



IGI



January 13, 2026
IGI Report No **LG764656957**
PRINCESS CUT
6.48 X 6.44 X 4.64 MM
Carat Weight **1.72 CARAT**
Color Grade **H**
Clarity Grade **VVS 2**
Depth **72%**
Table **73%**
Girdle **Thin To Medium**
Culet **Pointed**
Polish **EXCELLENT**
Symmetry **EXCELLENT**
Fluorescence **NONE**
Inscription(s) **IGI LG764656957**
Comments: This Laboratory Grown Diamond was created by Chemical Vapor Deposition (CVD) growth process. Type IIa