



**ELECTRONIC COPY**

## LABORATORY GROWN DIAMOND REPORT

January 16, 2026	
IGI Report Number	LG764654697
Description	LABORATORY GROWN DIAMOND
Shape and Cutting Style	CUT CORNERED RECTANGULAR MODIFIED BRILLIANT
Measurements	7.15 X 4.75 X 3.17 MM

## GRADING RESULTS

Carat Weight	1.01 CARAT
Color Grade	F
Clarity Grade	VS 2

### ADDITIONAL GRADING INFORMATION

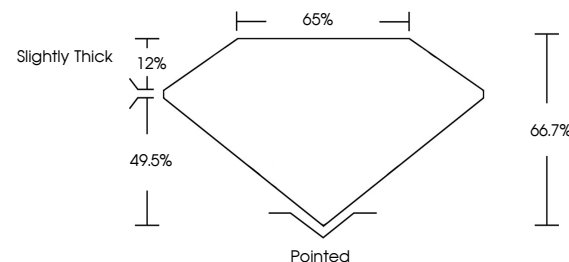
Polish	EXCELLENT
Symmetry	EXCELLENT
Fluorescence	NONE

Inscription(s)  LG764654697

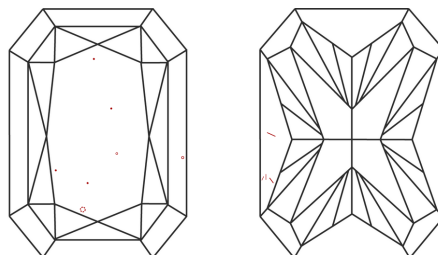
Comments: This Laboratory Grown Diamond was created by Chemical Vapor Deposition (CVD) growth process.  
Type IIa

LG764654697  
Report verification at [lgi.org](https://lgi.org)

## PROPORTIONS

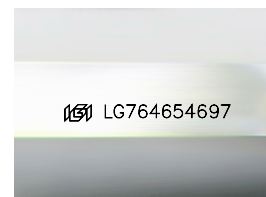


## CLARITY CHARACTERISTICS



## KEY TO SYMBOLS

Red symbols indicate internal characteristics.  
Green symbols indicate external characteristics.



Sample Image Used

## COLOR

D E F G H I J Faint Very Light Light

## CLARITY

FL	IF	VVS <sup>1-2</sup>	VS <sup>1-2</sup>	SI <sup>1-2</sup>	I <sup>1-3</sup>
Flawless	Internally Flawless	Very Very Slightly Included	Very Slightly Included	Slightly Included	Included

## LABORATORY GROWN DIAMOND REPORT

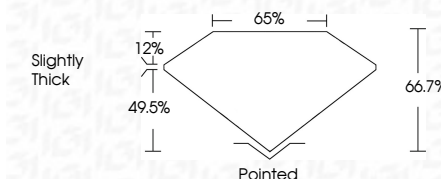


January 16, 2026	
IGI Report Number	LG764654697
Description	LABORATORY GROWN DIAMOND
Shape and Cutting Style	CUT CORNERED RECTANGULAR MODIFIED BRILLIANT

Measurements **7.15 X 4.75 X 3.17 MM**

## GRADING RESULTS

Carat Weight	1.01 CARAT
Color Grade	F
Clarity Grade	VS 2



### ADDITIONAL GRADING INFORMATION

Polish	EXCELLENT
Symmetry	EXCELLENT
Fluorescence	NONE
Inscription(s)	15 LG764654697

Comments: This Laboratory Grown Diamond was created by Chemical Vapor Deposition (CVD) growth process.  
Type IIa



© IGI 2020, International Gemological Institute

FD - 10 20

**www.igi.org**

THIS DOCUMENT WAS PRODUCED WITH THE FOLLOWING SECURITY MEASURES: SPECIAL DOCUMENT PAPER, INK SCREENS, WATERMARK, BACKGROUND DESIGNS, HOLOGRAM AND OTHER SECURITY FEATURES NOT LISTED AND DO EXCEED DOCUMENT SECURITY INDUSTRY GUIDELINES

January 16, 2026	
CU Report No. LG74654697	
CU CUT CORNER, RECT. MODIFIED BRILLIANT	
1.01 CARAT	
VS 2	
66.7%	
65%	
slightly thick	
Pointed	
EXCELLENT	
EXCELLENT	
NONE	
lg01 LG74654697	

Comments:

The Laboratory Grown Diamond was  
 a Chemical Vapor Deposition  
 (CVD) growth process.  
 type IIG