



# INTERNATIONAL GEMOLOGICAL INSTITUTE

ELECTRONIC COPY

## LABORATORY GROWN DIAMOND REPORT

January 15, 2026  
IGI Report Number **LG764651534**  
Description **LABORATORY GROWN DIAMOND**  
Shape and Cutting Style **OVAL BRILLIANT**  
Measurements **6.87 X 4.85 X 3.06 MM**

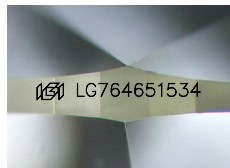
### GRADING RESULTS

Carat Weight **0.65 CARAT**  
Color Grade **D**  
Clarity Grade **INTERNALLY FLAWLESS**

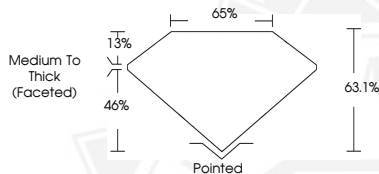
### ADDITIONAL GRADING INFORMATION

Polish **EXCELLENT**  
Symmetry **VERY GOOD**  
Fluorescence **NONE**  
Inscription(s) **IGI LG764651534**

Comments: As Grown - No indication of post-growth treatment. This Laboratory Grown Diamond was created by High Pressure High Temperature (HPHT) growth process. Type II



Sample Image Used



January 15, 2026  
IGI Report Number **LG764651534**  
**OVAL BRILLIANT**  
**LABORATORY GROWN DIAMOND**  
**6.87 X 4.85 X 3.06 MM**  
Carat Weight **0.65 CARAT**  
Color Grade **D**  
Clarity Grade **I.F.**  
Polish **EXCELLENT**  
Symmetry **VERY GOOD**  
Fluorescence **NONE**  
Inscription(s) **IGI LG764651534**

Comments: As Grown - No indication of post-growth treatment. This Laboratory Grown Diamond was created by High Pressure High Temperature (HPHT) growth process. Type II



January 15, 2026  
IGI Report Number **LG764651534**  
**OVAL BRILLIANT**  
**LABORATORY GROWN DIAMOND**  
**6.87 X 4.85 X 3.06 MM**  
Carat Weight **0.65 CARAT**  
Color Grade **D**  
Clarity Grade **I.F.**  
Polish **EXCELLENT**  
Symmetry **VERY GOOD**  
Fluorescence **NONE**  
Inscription(s) **IGI LG764651534**

Comments: As Grown - No indication of post-growth treatment. This Laboratory Grown Diamond was created by High Pressure High Temperature (HPHT) growth process. Type II



THIS DOCUMENT WAS PRODUCED WITH THE FOLLOWING SECURITY MEASURES: SPECIAL DOCUMENT PAPER, INK SCREENS, WATERMARK, BACKGROUND DESIGNS, HOLOGRAM AND OTHER SECURITY FEATURES NOT LISTED AND DO EXCEED DOCUMENT SECURITY INDUSTRY GUIDELINES.

For terms & conditions and to verify this report, please visit [www.igi.org](http://www.igi.org)