



ELECTRONIC COPY

LABORATORY GROWN DIAMOND REPORT

January 8, 2026	
IGI Report Number	LG764650189
Description	LABORATORY GROWN DIAMOND
Shape and Cutting Style	EMERALD CUT
Measurements	8.64 X 6.01 X 4.01 MM

GRADING RESULTS

Carat Weight	2.04 CARATS
Color Grade	D
Clarity Grade	VVS 2

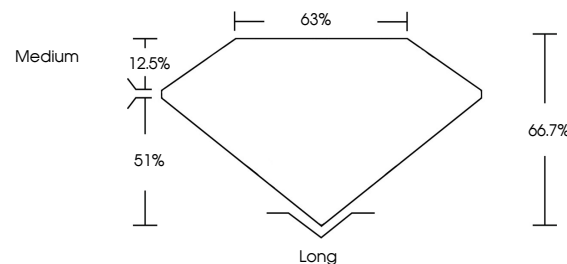
ADDITIONAL GRADING INFORMATION

Polish	EXCELLENT
Symmetry	EXCELLENT
Fluorescence	NONE
Inscription(s)	15 LG764650189

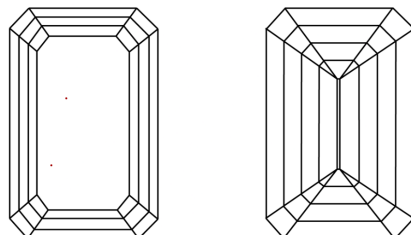
Comments: This Laboratory Grown Diamond was created by Chemical Vapor Deposition (CVD) growth process.
Type IIa

LG764650189
Report verification at lgi.org

PROPORTIONS

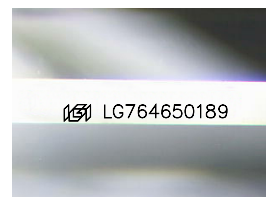


CLARITY CHARACTERISTICS



KEY TO SYMBOLS

Red symbols indicate internal characteristics.
Green symbols indicate external characteristics.



Sample Image Used

COLOR

D E F G H I J Faint Very Light Light

CLARITY

FL	IF	VVS ¹⁻²	VS ¹⁻²	SI ¹⁻²	I ¹⁻³
Flawless	Internally Flawless	Very Very Slightly Included	Very Slightly Included	Slightly Included	Included

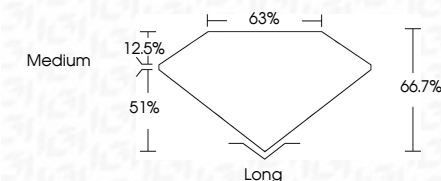
LABORATORY GROWN DIAMOND REPORT



January 8, 2026	
IGI Report Number	LG764650189
Description	LABORATORY GROWN DIAMOND
Shape and Cutting Style	EMERALD CUT
Measurements	8.64 X 6.01 X 4.01 MM

GRADING RESULTS

Carat Weight	2.04 CARATS
Color Grade	D
Clarity Grade	VVS 2



ADDITIONAL GRADING INFORMATION

Polish	EXCELLENT
Symmetry	EXCELLENT
Fluorescence	NONE
Inscription(s)	 LG764650189
Comments: This Laboratory Grown Diamond was created by Chemical Vapor Deposition (CVD) growth process.	
Type IIa	



IG



www.igi.org

© IGI 2020, International Gemological Institute

FD - 10 20



THIS DOCUMENT WAS PRODUCED WITH THE FOLLOWING SECURITY MEASURES: SPECIAL DOCUMENT PAPER, INK SCREENS, WATERMARK, BACKGROUND DESIGNS, HOLOGRAM AND OTHER SECURITY FEATURES NOT LISTED AND DO EXCEED DOCUMENT SECURITY INDUSTRY GUIDELINES

	January 8, 2026
	GL Report No LG76460189
SHERAD CUT	
LEGACY X 4.01 X 4.01 MM	2.04 CARATS
Color Grade	D
Clarity Grade	VVS 2
Depth	66.7%
Table	65%
Girdle	Medium
Culet	Long
Poish	EXCELLENT
Symmetry	EXCELLENT
Fluorescence	NONE
Inscriptions(s)	I691LG76460189

Comments:

The Laboratory Grown Diamond was
certified by Chemical Vapor Deposition
growth process.

Type IIc.