



ELECTRONIC COPY

LG764648305
Report verification at igi.org



January 28, 2026
IGI Report Number **LG764648305**
Description **LABORATORY GROWN DIAMOND**
Shape and Cutting Style **PEAR BRILLIANT**
Measurements **17.94 X 10.85 X 6.78 MM**
GRADING RESULTS
Carat Weight **8.00 CARATS**
Color Grade **FANCY INTENSE PINK**
Clarity Grade **VVS 2**

January 28, 2026
IGI Report Number **LG764648305**
Description **LABORATORY GROWN DIAMOND**
Shape and Cutting Style **PEAR BRILLIANT**
Measurements **17.94 X 10.85 X 6.78 MM**

GRADING RESULTS

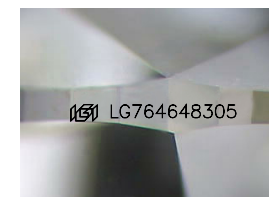
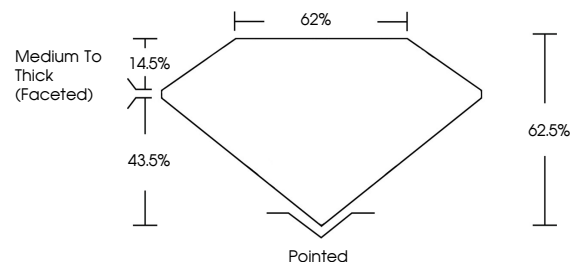
Carat Weight **8.00 CARATS**
Color Grade **FANCY INTENSE PINK**
Clarity Grade **VVS 2**

ADDITIONAL GRADING INFORMATION

Polish **EXCELLENT**
Symmetry **VERY GOOD**
Fluorescence **SLIGHT**
Inscription(s) **LG764648305**

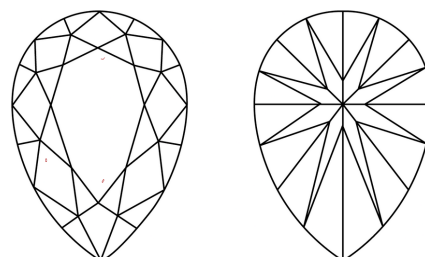
Comments: This Laboratory Grown Diamond was created by Chemical Vapor Deposition (CVD) growth process.
Indications of post-growth treatment.

PROPORTIONS



Sample Image Used

CLARITY CHARACTERISTICS



KEY TO SYMBOLS

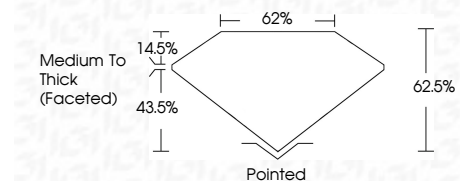
Red symbols indicate internal characteristics.
Green symbols indicate external characteristics.

COLOR

D E F G H I J Faint Very Light Light

CLARITY

FL	IF	VVS ¹⁻²	VS ¹⁻²	SI ¹⁻²	I ¹⁻³
Flawless	Internally Flawless	Very Very Slightly Included	Very Slightly Included	Slightly Included	Included



ADDITIONAL GRADING INFORMATION

Polish **EXCELLENT**
Symmetry **VERY GOOD**
Fluorescence **SLIGHT**
Inscription(s) **LG764648305**
Comments: This Laboratory Grown Diamond was created by Chemical Vapor Deposition (CVD) growth process.
Indications of post-growth treatment.



IGI



January 28, 2026
IGI Report No **LG764648305**
PEAR BRILLIANT
8.00 CARATS
Carat Weight
FANCY INTENSE PINK
Color Grade
VVS 2
Clarity Grade
62%
Table
62%
Girdle
Medium To Thick (Faceted)
Culet
Pointed
Polish
EXCELLENT
Symmetry
VERY GOOD
Fluorescence
SLIGHT
Inscription(s)
 LG764648305
Comments: This Laboratory Grown Diamond was created by Chemical Vapor Deposition (CVD) growth process.
Indications of post-growth treatment.