



**ELECTRONIC COPY**

LG764645545  
Report verification at igi.org



February 9, 2026

IGI Report Number **LG764645545**

Description **LABORATORY GROWN DIAMOND**

Shape and Cutting Style **SQUARE EMERALD CUT**

Measurements **7.06 X 7.06 X 4.51 MM**

**GRADING RESULTS**

Carat Weight **2.04 CARATS**

Color Grade **E**

Clarity Grade **VVS 2**

February 9, 2026

IGI Report Number **LG764645545**

Description **LABORATORY GROWN DIAMOND**

Shape and Cutting Style **SQUARE EMERALD CUT**

Measurements **7.06 X 7.06 X 4.51 MM**

**GRADING RESULTS**

Carat Weight **2.04 CARATS**

Color Grade **E**

Clarity Grade **VVS 2**

**ADDITIONAL GRADING INFORMATION**

Polish **EXCELLENT**

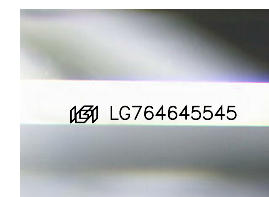
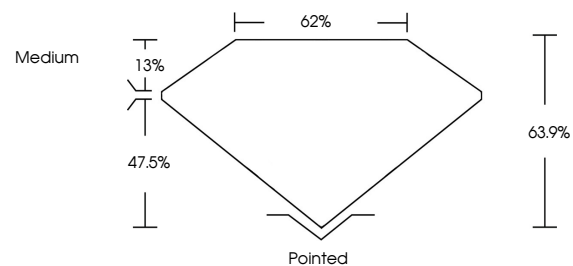
Symmetry **EXCELLENT**

Fluorescence **NONE**

Inscription(s) **IGI LG764645545**

Comments: This Laboratory Grown Diamond was created by Chemical Vapor Deposition (CVD) growth process.  
Type IIa

**PROPORTIONS**



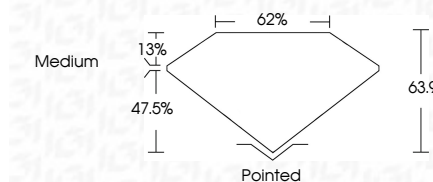
Sample Image Used

**COLOR**

D E F G H I J Faint Very Light Light

**CLARITY**

FL	IF	VVS <sup>1-2</sup>	VS <sup>1-2</sup>	SI <sup>1-2</sup>	I <sup>1-3</sup>
Flawless	Internally Flawless	Very Very Slightly Included	Very Slightly Included	Slightly Included	Included



**ADDITIONAL GRADING INFORMATION**

Polish **EXCELLENT**

Symmetry **EXCELLENT**

Fluorescence **NONE**

Inscription(s) **IGI LG764645545**

Comments: This Laboratory Grown Diamond was created by Chemical Vapor Deposition (CVD) growth process.  
Type IIa



**IGI**



February 9, 2026  
IGI Report No LG764645545  
SQUARE EMERALD CUT  
7.06 X 7.06 X 4.51 MM  
2.04 CARATS  
E  
2.04 CARATS  
E  
VVS 2  
63.9%  
62%  
Medium  
Pointed  
EXCELLENT  
EXCELLENT  
NONE  
IGI LG764645545

Comments: This Laboratory Grown Diamond was created by Chemical Vapor Deposition (CVD) growth process.  
Type IIa