



**ELECTRONIC COPY**

LG764643994  
Report verification at [igi.org](http://igi.org)



January 13, 2026

IGI Report Number **LG764643994**

Description **LABORATORY GROWN DIAMOND**

Shape and Cutting Style **ROUND BRILLIANT**

Measurements **7.35 - 7.41 X 4.54 MM**

**GRADING RESULTS**

Carat Weight **1.52 CARAT**

Color Grade **E**

Clarity Grade **VVS 2**

Cut Grade **IDEAL**

January 13, 2026

IGI Report Number **LG764643994**

Description **LABORATORY GROWN DIAMOND**

Shape and Cutting Style **ROUND BRILLIANT**

Measurements **7.35 - 7.41 X 4.54 MM**

**GRADING RESULTS**

Carat Weight **1.52 CARAT**

Color Grade **E**

Clarity Grade **VVS 2**

Cut Grade **IDEAL**

**ADDITIONAL GRADING INFORMATION**

Polish **EXCELLENT**

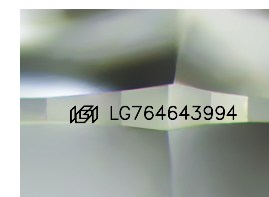
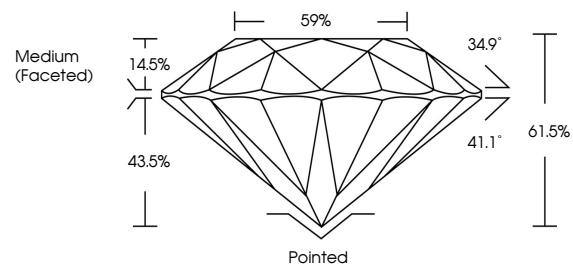
Symmetry **EXCELLENT**

Fluorescence **NONE**

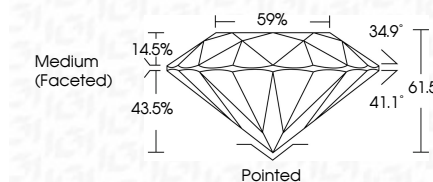
Inscription(s) **LG764643994**

Comments: This Laboratory Grown Diamond was created by Chemical Vapor Deposition (CVD) growth process. Type IIa

**PROPORTIONS**



Sample Image Used



**COLOR**

D E F G H I J Faint Very Light Light

**CLARITY**

| FL       | IF                  | VVS <sup>1-2</sup>          | VS <sup>1-2</sup>      | SI <sup>1-2</sup> | I <sup>1-3</sup> |
|----------|---------------------|-----------------------------|------------------------|-------------------|------------------|
| Flawless | Internally Flawless | Very Very Slightly Included | Very Slightly Included | Slightly Included | Included         |

**ADDITIONAL GRADING INFORMATION**

Polish **EXCELLENT**

Symmetry **EXCELLENT**

Fluorescence **NONE**

Inscription(s) **LG764643994**

Comments: This Laboratory Grown Diamond was created by Chemical Vapor Deposition (CVD) growth process. Type IIa



**IGI**



|                  |                           |                 |                       |            |     |       |       |       |     |                  |         |           |           |      |             |
|------------------|---------------------------|-----------------|-----------------------|------------|-----|-------|-------|-------|-----|------------------|---------|-----------|-----------|------|-------------|
| January 13, 2026 | IGI Report No LG764643994 | ROUND BRILLIANT | 7.35 - 7.41 X 4.54 MM | 1.52 CARAT | E   | VVS 2 | IDEAL | 61.5% | 59% | Medium (Faceted) | Pointed | EXCELLENT | EXCELLENT | NONE | LG764643994 |
| IGI              | IGI                       | IGI             | IGI                   | IGI        | IGI | IGI   | IGI   | IGI   | IGI | IGI              | IGI     | IGI       | IGI       | IGI  | IGI         |

Comments: This Laboratory Grown Diamond was created by Chemical Vapor Deposition (CVD) growth process. Type IIa