

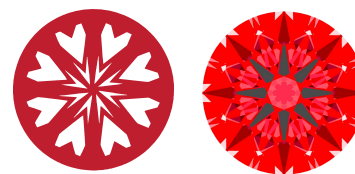


INTERNATIONAL GEMOLOGICAL INSTITUTE

LG764642321
Report verification at igi.org

LIGHT PERFORMANCE REPORT

Light Performance Grade: **Exceptional**



Structured Light Environment Representation



FL	IF	VS ¹⁻²	VS ¹⁻²	SI ¹⁻²	I ¹⁻³
Flawless	Internally Flawless	Very Very Slightly Included	Very Slightly Included	Slightly Included	Included



January 9, 2026
 IGI Report Number **LG764642321**
 Description **LABORATORY GROWN DIAMOND**
 Shape and Cutting Style **ROUND BRILLIANT**
 Measurements **9.11 - 9.14 X 5.55 MM**
GRADING RESULTS
 Carat Weight **2.82 CARATS**
 Color Grade **D**
 Clarity Grade **VVS 2**
 Cut Grade **IDEAL**

ELECTRONIC COPY LABORATORY GROWN DIAMOND REPORT

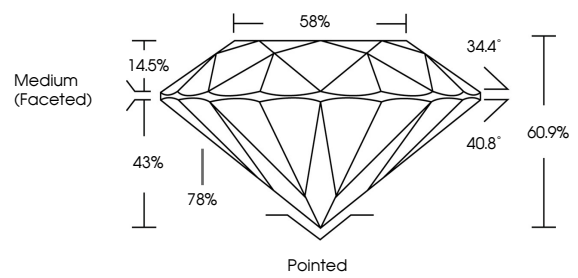
January 9, 2026
 IGI Report Number **LG764642321**
 Description **LABORATORY GROWN DIAMOND**
 Shape and Cutting Style **ROUND BRILLIANT**
 Measurements **9.11 - 9.14 x 5.55 mm**

GRADING RESULTS
 Carat Weight **2.82 CARATS**
 Color Grade **D**
 Clarity Grade **VVS 2**
 Cut Grade **IDEAL**

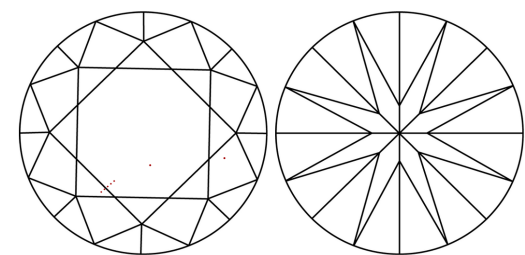
ADDITIONAL GRADING INFORMATION
 Polish **EXCELLENT**
 Symmetry **EXCELLENT**
 Fluorescence **NONE**
 Inscription(s) **IGI LG764642321**

Comments: HEARTS & ARROWS
 This Laboratory Grown Diamond was created by Chemical Vapor Deposition (CVD) growth process. Type IIa

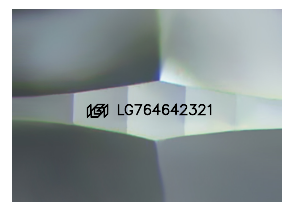
PROPORTIONS



CLARITY CHARACTERISTICS



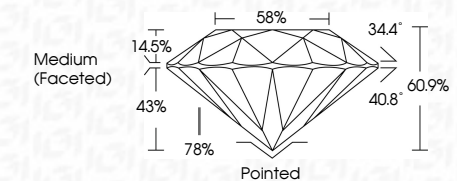
KEY TO SYMBOLS
 Red symbols indicate internal characteristics.
 Green symbols indicate external characteristics.



Sample Image Used

www.igi.org

© IGI 2020, International Gemological Institute FD - 10 20



ADDITIONAL GRADING INFORMATION
 Polish **EXCELLENT**
 Symmetry **EXCELLENT**
 Fluorescence **NONE**
 Inscription(s) **IGI LG764642321**
 Comments: HEARTS & ARROWS
 This Laboratory Grown Diamond was created by Chemical Vapor Deposition (CVD) growth process. Type IIa



January 9, 2026	IGI Report No LG764642321	ROUND BRILLIANT	2.82 CARATS	D	VVS 2	IDEAL	60.9%	58%	Medium (Faceted)	Pointed	EXCELLENT	EXCELLENT	NONE	IGI LG764642321
9.11 - 9.14 X 5.55 MM	Carat Weight	Color Grade	Clarity Grade	Cut Grade	Depth	Table	Girdle	Culet	Polish	Symmetry	Fluorescence	Inscription(s)	Comments: HEARTS & ARROWS	This Laboratory Grown Diamond was created by Chemical Vapor Deposition (CVD) growth process. Type IIa