

INTERNATIONAL
GEMOLOGICAL
INSTITUTE

ELECTRONIC COPY

LABORATORY GROWN DIAMOND REPORT

January 7, 2026

IGI Report Number

Description

Shape and Cutting Style

Measurements

LG764642267

LABORATORY GROWN DIAMOND

OVAL BRILLIANT

11.73 x 8.11 x 5.06 mm

GRADING RESULTS

Carat Weight

Color Grade

Clarity Grade

3.00 CARATS

D

VVS 2

ADDITIONAL GRADING INFORMATION

Polish

Symmetry

Fluorescence

Inscription(s)

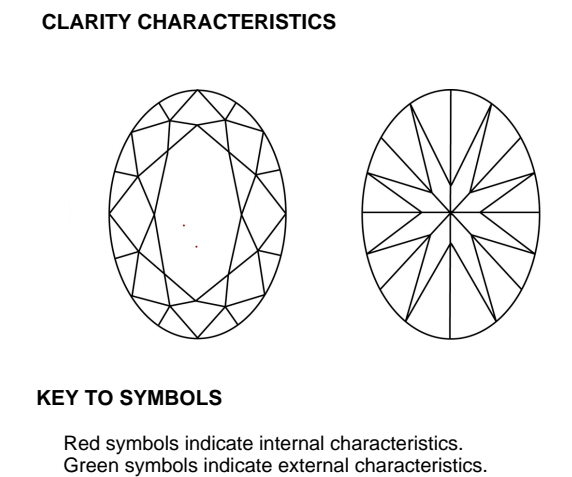
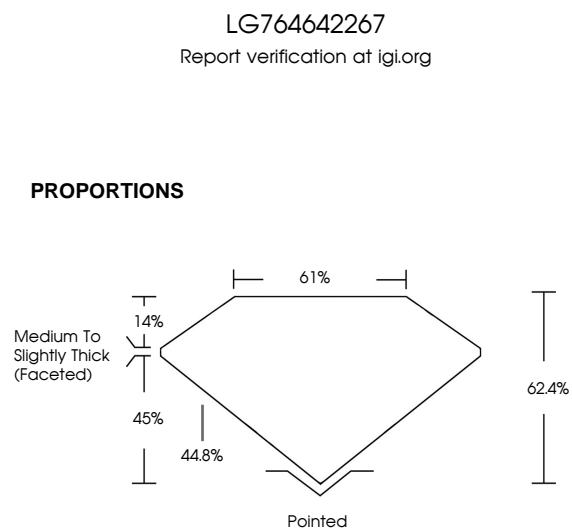
EXCELLENT

EXCELLENT

NONE


IGI LG764642267

Comments: This Laboratory Grown Diamond was created by Chemical Vapor Deposition (CVD) growth process. Type IIa



LIGHT PERFORMANCE REPORT

Light Performance Grade: Exceptional



Structured Light Environment Representation

ModerateHighSuperiorExceptional

Light Performance

Brightness

Fire

Contrast

COLOR

D E F G H I J FaintVery LightLight



CLARITY


FL IF VVS¹⁻² VS¹⁻² SI¹⁻² I¹⁻³

Flawless Internally Flawless Very Very Slightly Included Very Slightly Included Slightly Included Included

© IGI 2020, International Gemological Institute

FD - 10 20





January 7, 2026

IGI Report Number

Description

Shape and Cutting Style

Measurements

LG764642267

LABORATORY GROWN DIAMOND

OVAL BRILLIANT

11.73 X 8.11 X 5.06 MM

GRADING RESULTS

Carat Weight

Color Grade

Clarity Grade

3.00 CARATS

D

VVS 2

ADDITIONAL GRADING INFORMATION

Polish

Symmetry

Fluorescence

Inscription(s)

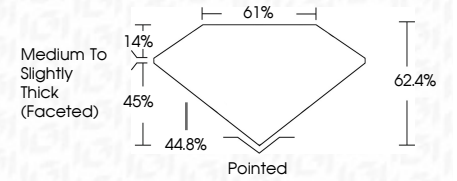
EXCELLENT

EXCELLENT

NONE

IGI LG764642267

Comments: This Laboratory Grown Diamond was created by Chemical Vapor Deposition (CVD) growth process. Type IIa



January 7, 2026	IGI Report No LG764642267	OVAL BRILLIANT	3.00 CARATS	D	VVS 2	62.4%	61%	Medium To Slightly Thick (Faceted)	Pointed	EXCELLENT	EXCELLENT	NONE	IGI LG764642267
11.73 X 8.11 X 5.06 MM	Carat Weight	Color Grade	Depth	Table	Girdle	Culet	Polish	Symmetry	Fluorescence	Inscription(s)	Comments: This Laboratory Grown Diamond was created by Chemical Vapor Deposition (CVD) growth process. Type IIa		