

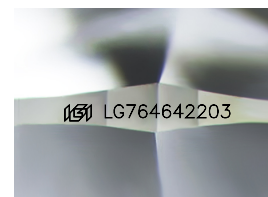
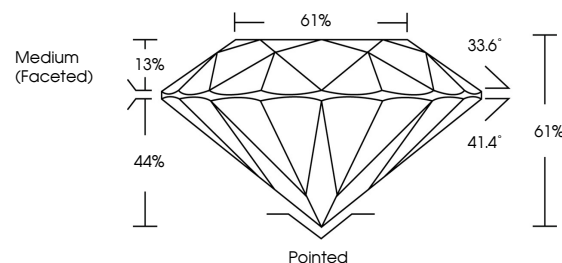


ELECTRONIC COPY

LABORATORY GROWN DIAMOND REPORT

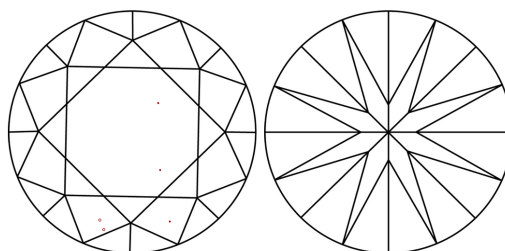
LG764642203
Report verification at igi.org

PROPORTIONS



Sample Image Used

CLARITY CHARACTERISTICS



KEY TO SYMBOLS

Red symbols indicate internal characteristics.
Green symbols indicate external characteristics.

COLOR

D E F G H I J Faint Very Light Light

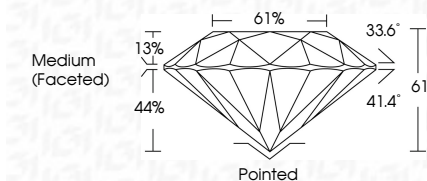
CLARITY

FL	IF	VVS ¹⁻²	VS ¹⁻²	SI ¹⁻²	I ¹⁻³
Flawless	Internally Flawless	Very Very Slightly Included	Very Slightly Included	Slightly Included	Included

LABORATORY GROWN DIAMOND REPORT



January 11, 2026	
IGI Report Number	LG764642203
Description	LABORATORY GROWN DIAMOND
Shape and Cutting Style	ROUND BRILLIANT
Measurements	8.11 - 8.15 X 4.95 MM
GRADING RESULTS	
Carat Weight	2.01 CARATS
Color Grade	G
Clarity Grade	VS 1
Cut Grade	EXCELLENT



ADDITIONAL GRADING INFORMATION

Polish	EXCELLENT
Symmetry	EXCELLENT
Fluorescence	NONE
Inscription(s)	LG LG764642203
<p>Comments: This Laboratory Grown Diamond was created by Chemical Vapor Deposition (CVD) growth process.</p> <p>Type IIa</p>	



© IGI 2020, International Gemological Institute

FD - 10 20

www.igi.org



THIS DOCUMENT WAS PRODUCED WITH THE FOLLOWING SECURITY MEASURES: SPECIAL DOCUMENT PAPER, INK SCREENS, WATERMARK, BACKGROUND DESIGNS, HOLOGRAM AND OTHER SECURITY FEATURES NOT LISTED AND DO EXCEED DOCUMENT SECURITY INDUSTRY GUIDELINES

January 11, 2026
GI Report No LG764642203
ROUND BRILLIANT

8.11 - 8.15 X 4.95 MM

3.11 - 8.15 X 4.95 MM
Carat Weight 2.01 CARATS

Catali Weig II	ZUI CARAIS
Color Grade	G

Clarity Grade	VS 1
---------------	------

Out Grade	EXCELLENT
4017	

Depth	61%
Table	61%

Girdle	Medium (Faceted)	Ct

7
4
1
6

	Pointed	EXCELLENT
Culet		
Polish		

EXCELLENT

EXCELLENT

Symmetry

Fluorescence	NONE
Inscription(s)	1811 G76464203

Registration(\$)

Comments:
This Laboratory Grown Diamond was

created by Chemical Vapor Deposition (CVD) growth process.

Type IIa