



LABORATORY GROWN DIAMOND REPORT

January 9, 2026
 IGI Report Number **LG764636550**
 Description **LABORATORY GROWN DIAMOND**
 Shape and Cutting Style **HEXAGONAL MODIFIED STEP CUT**
 Measurements **7.24 X 4.04 X 2.61 MM**

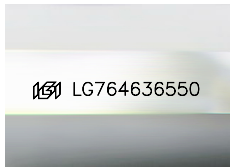
GRADING RESULTS

Carat Weight **0.57 CARAT**
 Color Grade **E**
 Clarity Grade **VVS 2**

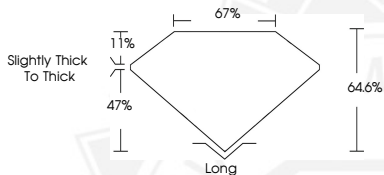
ADDITIONAL GRADING INFORMATION

Polish **EXCELLENT**
 Symmetry **EXCELLENT**
 Fluorescence **NONE**
 Inscription(s) **IGI LG764636550**

Comments: This Laboratory Grown Diamond was created by Chemical Vapor Deposition (CVD) growth process. Type IIa



Sample Image Used



January 9, 2026

IGI Report Number LG764636550
HEXAGONAL MODIFIED STEP CUT
LABORATORY GROWN DIAMOND
7.24 X 4.04 X 2.61 MM

Carat Weight **0.57 CARAT**
 Color Grade **E**
 Clarity Grade **VVS 2**
 Polish **EXCELLENT**
 Symmetry **EXCELLENT**
 Fluorescence **NONE**
 Inscription(s) **IGI LG764636550**

Comments: This Laboratory Grown Diamond was created by Chemical Vapor Deposition (CVD) growth process. Type IIa



January 9, 2026

IGI Report Number LG764636550
HEXAGONAL MODIFIED STEP CUT
LABORATORY GROWN DIAMOND
7.24 X 4.04 X 2.61 MM

Carat Weight **0.57 CARAT**
 Color Grade **E**
 Clarity Grade **VVS 2**
 Polish **EXCELLENT**
 Symmetry **EXCELLENT**
 Fluorescence **NONE**
 Inscription(s) **IGI LG764636550**

Comments: This Laboratory Grown Diamond was created by Chemical Vapor Deposition (CVD) growth process. Type IIa



THIS DOCUMENT WAS PRODUCED WITH THE FOLLOWING SECURITY MEASURES: SPECIAL DOCUMENT PAPER, INK SCREENS, WATERMARK, BACKGROUND DESIGNS, HOLOGRAM AND OTHER SECURITY FEATURES NOT LISTED AND DO EXCEED DOCUMENT SECURITY INDUSTRY GUIDELINES.