



ELECTRONIC COPY

LG764634616
Report verification at igi.org



January 13, 2026

IGI Report Number LG764634616

Description LABORATORY GROWN DIAMOND

Shape and Cutting Style OVAL BRILLIANT

Measurements 11.07 X 7.77 X 4.82 MM

GRADING RESULTS

Carat Weight 2.59 CARATS

Color Grade F

Clarity Grade VVS 2

January 13, 2026
IGI Report Number LG764634616
Description LABORATORY GROWN DIAMOND
Shape and Cutting Style OVAL BRILLIANT
Measurements 11.07 X 7.77 X 4.82 MM

GRADING RESULTS

Carat Weight 2.59 CARATS

Color Grade F

Clarity Grade VVS 2

ADDITIONAL GRADING INFORMATION

Polish EXCELLENT

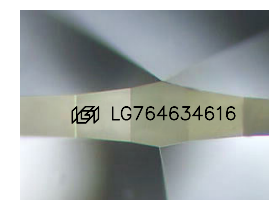
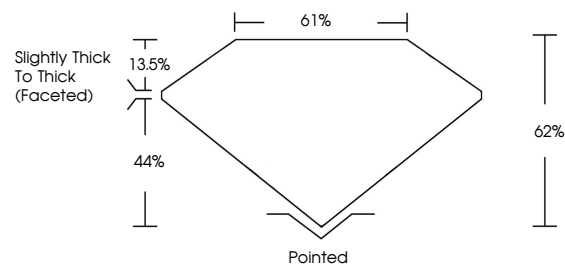
Symmetry EXCELLENT

Fluorescence NONE

Inscription(s) IGI LG764634616

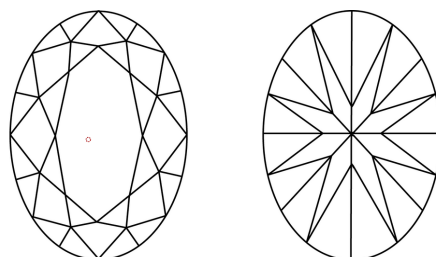
Comments: This Laboratory Grown Diamond was created by Chemical Vapor Deposition (CVD) growth process. Type IIa

PROPORTIONS



Sample Image Used

CLARITY CHARACTERISTICS



KEY TO SYMBOLS

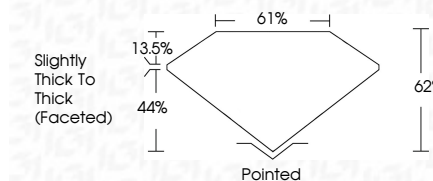
Red symbols indicate internal characteristics. Green symbols indicate external characteristics.

COLOR

D E F G H I J Faint Very Light Light

CLARITY

FL IF VVS 1-2 VS 1-2 SI 1-2 I 1-3
Flawless Internally Flawless Very Very Slightly Included Very Slightly Included Slightly Included Included



ADDITIONAL GRADING INFORMATION

Polish EXCELLENT

Symmetry EXCELLENT

Fluorescence NONE

Inscription(s) IGI LG764634616

Comments: This Laboratory Grown Diamond was created by Chemical Vapor Deposition (CVD) growth process. Type IIa



January 13, 2026
IGI Report No LG764634616
OVAL BRILLIANT
11.07 X 7.77 X 4.82 MM
2.59 CARATS
Color Grade F
Clarity Grade VVS 2
Depth 62%
Table 61%
Girdle Slightly Thick To Thick (Faceted)
Culet Pointed
Polish EXCELLENT
Symmetry EXCELLENT
Fluorescence NONE
Inscription(s) IGI LG764634616
Comments: This Laboratory Grown Diamond was created by Chemical Vapor Deposition (CVD) growth process. Type IIa