



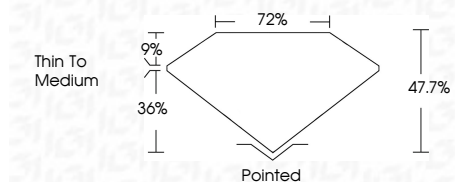
ELECTRONIC COPY

LG764630436
Report verification at igi.org



January 13, 2026
IGI Report Number **LG764630436**
Description **LABORATORY GROWN DIAMOND**
Shape and Cutting Style **MODIFIED PIE MIXED CUT**
Measurements **20.12 X 15.12 X 7.21 MM**

GRADING RESULTS
Carat Weight **15.21 CARATS**
Color Grade **F**
Clarity Grade **VVS 2**



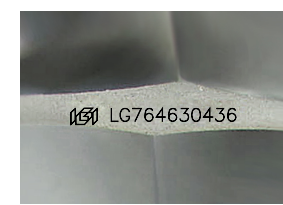
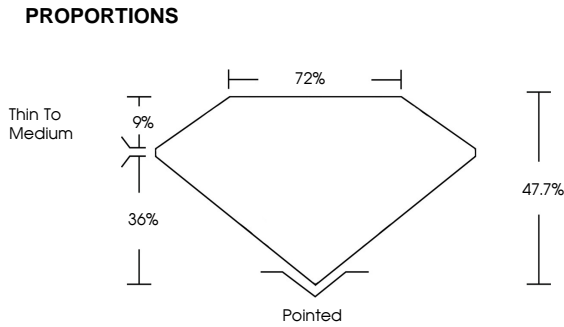
ADDITIONAL GRADING INFORMATION
Polish **EXCELLENT**
Symmetry **EXCELLENT**
Fluorescence **NONE**
Inscription(s) **IGI LG764630436**
Comments: This Laboratory Grown Diamond was created by Chemical Vapor Deposition (CVD) growth process. Type IIa



January 13, 2026
IGI Report No **LG764630436**
MODIFIED PIE MIXED CUT
20.12 X 15.12 X 7.21 MM
15.21 CARATS
F
VVS 2
47.7%
72%
Thin To Medium
Pointed
EXCELLENT
EXCELLENT
NONE
IGI LG764630436
Comments: This Laboratory Grown Diamond was created by Chemical Vapor Deposition (CVD) growth process. Type IIa

January 13, 2026
IGI Report Number **LG764630436**
Description **LABORATORY GROWN DIAMOND**
Shape and Cutting Style **MODIFIED PIE MIXED CUT**
Measurements **20.12 X 15.12 X 7.21 MM**
GRADING RESULTS
Carat Weight **15.21 CARATS**
Color Grade **F**
Clarity Grade **VVS 2**

ADDITIONAL GRADING INFORMATION
Polish **EXCELLENT**
Symmetry **EXCELLENT**
Fluorescence **NONE**
Inscription(s) **IGI LG764630436**
Comments: This Laboratory Grown Diamond was created by Chemical Vapor Deposition (CVD) growth process. Type IIa



Sample Image Used

COLOR

D	E	F	G	H	I	J	Faint	Very Light	Light
---	---	---	---	---	---	---	-------	------------	-------

CLARITY

FL	IF	VVS ¹⁻²	VS ¹⁻²	SI ¹⁻²	I ¹⁻³
Flawless	Internally Flawless	Very Very Slightly Included	Very Slightly Included	Slightly Included	Included

