



ELECTRONIC COPY

LG764629994
Report verification at igi.org



January 16, 2026
IGI Report Number **LG764629994**
Description **LABORATORY GROWN DIAMOND**
Shape and Cutting Style **LOZENGE STEP CUT**
Measurements **11.68 X 7.20 X 3.85 MM**
GRADING RESULTS
Carat Weight **1.57 CARAT**
Color Grade **LIGHT YELLOW**
Clarity Grade **VVS 2**

LABORATORY GROWN DIAMOND REPORT

January 16, 2026
IGI Report Number **LG764629994**
Description **LABORATORY GROWN DIAMOND**
Shape and Cutting Style **LOZENGE STEP CUT**
Measurements **11.68 X 7.20 X 3.85 MM**

GRADING RESULTS

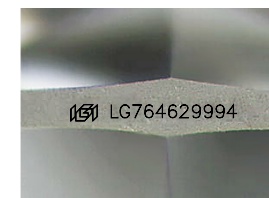
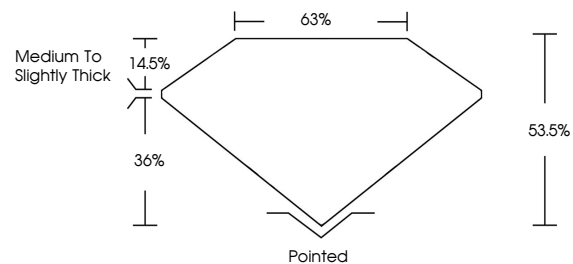
Carat Weight **1.57 CARAT**
Color Grade **LIGHT YELLOW**
Clarity Grade **VVS 2**

ADDITIONAL GRADING INFORMATION

Polish **EXCELLENT**
Symmetry **EXCELLENT**
Fluorescence **NONE**
Inscription(s) **IGI LG764629994**

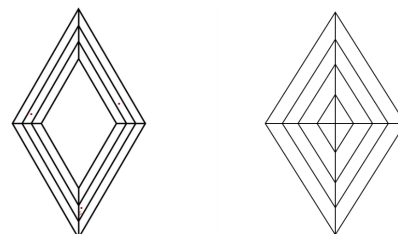
Comments: This Laboratory Grown Diamond was created by Chemical Vapor Deposition (CVD) growth process.

PROPORTIONS



Sample Image Used

CLARITY CHARACTERISTICS



KEY TO SYMBOLS

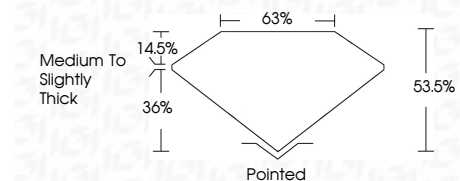
Red symbols indicate internal characteristics.
Green symbols indicate external characteristics.

COLOR

D E F G H I J Faint Very Light Light

CLARITY

| FL | IF | VVS ¹⁻² | VS ¹⁻² | SI ¹⁻² | I ¹⁻³ |
|----------|---------------------|-----------------------------|------------------------|-------------------|------------------|
| Flawless | Internally Flawless | Very Very Slightly Included | Very Slightly Included | Slightly Included | Included |



ADDITIONAL GRADING INFORMATION

Polish **EXCELLENT**
Symmetry **EXCELLENT**
Fluorescence **NONE**
Inscription(s) **IGI LG764629994**
Comments: This Laboratory Grown Diamond was created by Chemical Vapor Deposition (CVD) growth process.



January 16, 2026
IGI Report No **LG764629994**
LOZENGE STEP CUT
1.57 CARAT
LIGHT YELLOW
VVS 2
63.0%
Medium to Slightly Thick
Pointed
EXCELLENT
EXCELLENT
NONE
IGI LG764629994
Comments: This Laboratory Grown Diamond was created by Chemical Vapor Deposition (CVD) growth process.