



**ELECTRONIC COPY**

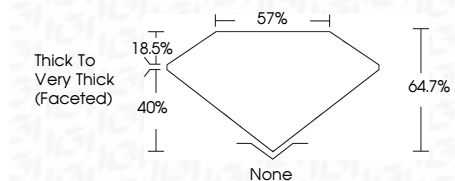
LG764629881  
Report verification at igi.org



January 12, 2026  
IGI Report Number **LG764629881**  
Description **LABORATORY GROWN DIAMOND**  
Shape and Cutting Style **CUSHION STEP CUT**  
Measurements **8.61 X 6.46 X 4.18 MM**

**GRADING RESULTS**

Carat Weight **2.08 CARATS**  
Color Grade **D**  
Clarity Grade **VS 1**



**ADDITIONAL GRADING INFORMATION**

Polish **EXCELLENT**  
Symmetry **EXCELLENT**  
Fluorescence **NONE**  
Inscription(s) **(IGI) LG764629881**  
Comments: This Laboratory Grown Diamond was created by Chemical Vapor Deposition (CVD) growth process. Type IIa



January 12, 2026  
IGI Report No LG764629881  
**CUSHION STEP CUT**  
8.61 X 6.46 X 4.18 MM  
2.08 CARATS  
D  
2.08 CARATS  
D  
VS 1  
64.7%  
57%  
Thick to Very Thick (Faceted)  
None  
EXCELLENT  
EXCELLENT  
NONE  
(IGI) LG764629881  
Comments: This Laboratory Grown Diamond was created by Chemical Vapor Deposition (CVD) growth process. Type IIa

**LABORATORY GROWN DIAMOND REPORT**

January 12, 2026  
IGI Report Number **LG764629881**  
Description **LABORATORY GROWN DIAMOND**  
Shape and Cutting Style **CUSHION STEP CUT**  
Measurements **8.61 X 6.46 X 4.18 MM**

**GRADING RESULTS**

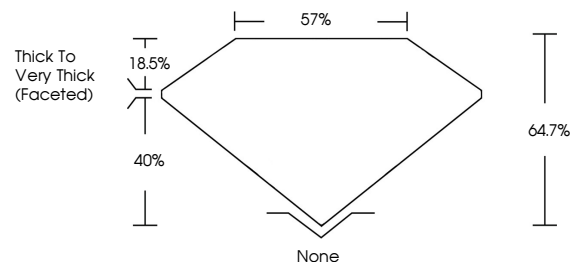
Carat Weight **2.08 CARATS**  
Color Grade **D**  
Clarity Grade **VS 1**

**ADDITIONAL GRADING INFORMATION**

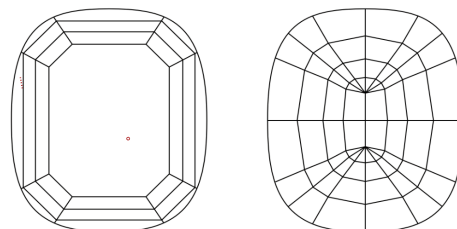
Polish **EXCELLENT**  
Symmetry **EXCELLENT**  
Fluorescence **NONE**  
Inscription(s) **(IGI) LG764629881**

Comments: This Laboratory Grown Diamond was created by Chemical Vapor Deposition (CVD) growth process. Type IIa

**PROPORTIONS**

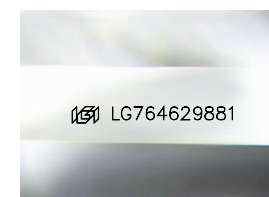


**CLARITY CHARACTERISTICS**



**KEY TO SYMBOLS**

Red symbols indicate internal characteristics.  
Green symbols indicate external characteristics.



Sample Image Used

**COLOR**

D E F G H I J Faint Very Light Light

**CLARITY**

FL	IF	VS <sup>1-2</sup>	VS <sup>1-2</sup>	SI <sup>1-2</sup>	I <sup>1-3</sup>
Flawless	Internally Flawless	Very Very Slightly Included	Very Slightly Included	Slightly Included	Included

