



ELECTRONIC COPY

LG764628900
Report verification at igi.org



January 21, 2026
IGI Report Number **LG764628900**
Description **LABORATORY GROWN DIAMOND**
Shape and Cutting Style **ROUND BRILLIANT**
Measurements **6.89 - 6.96 X 4.06 MM**
GRADING RESULTS
Carat Weight **1.18 CARAT**
Color Grade **M**
Clarity Grade **SI 1**
Cut Grade **EXCELLENT**

January 21, 2026
IGI Report Number **LG764628900**
Description **LABORATORY GROWN DIAMOND**
Shape and Cutting Style **ROUND BRILLIANT**
Measurements **6.89 - 6.96 X 4.06 MM**

GRADING RESULTS

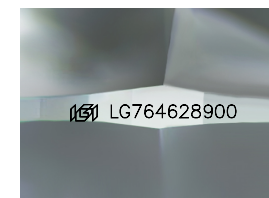
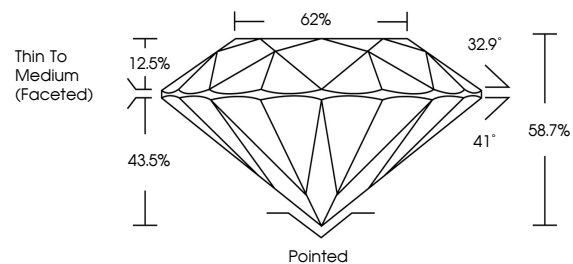
Carat Weight **1.18 CARAT**
Color Grade **M**
Clarity Grade **SI 1**
Cut Grade **EXCELLENT**

ADDITIONAL GRADING INFORMATION

Polish **VERY GOOD**
Symmetry **VERY GOOD**
Fluorescence **NONE**
Inscription(s) **IGI LG764628900**

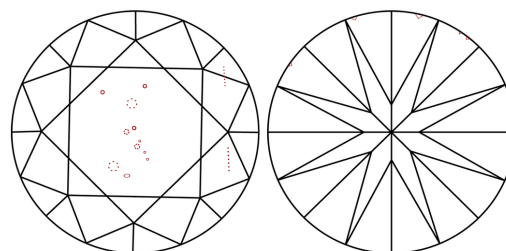
Comments: This Laboratory Grown Diamond was created by Chemical Vapor Deposition (CVD) growth process.
Type IIa

PROPORTIONS



Sample Image Used

CLARITY CHARACTERISTICS



KEY TO SYMBOLS

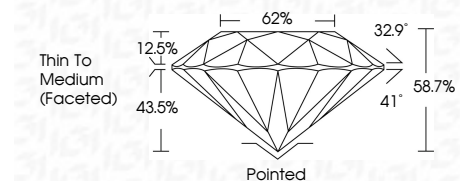
Red symbols indicate internal characteristics.
Green symbols indicate external characteristics.

COLOR

D E F G H I J Faint Very Light Light

CLARITY

FL	IF	VS ¹⁻²	VS ¹⁻²	SI ¹⁻²	I ¹⁻³
Flawless	Internally Flawless	Very Very Slightly Included	Very Slightly Included	Slightly Included	Included



ADDITIONAL GRADING INFORMATION

Polish **VERY GOOD**
Symmetry **VERY GOOD**
Fluorescence **NONE**
Inscription(s) **IGI LG764628900**
Comments: This Laboratory Grown Diamond was created by Chemical Vapor Deposition (CVD) growth process.
Type IIa



January 21, 2026
IGI Report No LG764628900
ROUND BRILLIANT
6.89 - 6.96 X 4.06 MM
1.18 CARAT
M
SI 1
EXCELLENT
58.7%
62%
Thin To Medium (Faceted)
Pointed
VERY GOOD
VERY GOOD
NONE
IGI LG764628900
Comments: This Laboratory Grown Diamond was created by Chemical Vapor Deposition (CVD) growth process.
Type IIa