



**ELECTRONIC COPY**

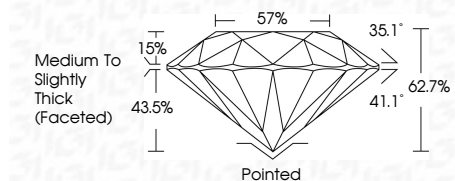
LG764628853  
Report verification at igi.org



January 20, 2026  
IGI Report Number **LG764628853**  
Description **LABORATORY GROWN DIAMOND**  
Shape and Cutting Style **ROUND BRILLIANT**  
Measurements **8.64 - 8.66 X 5.43 MM**

**GRADING RESULTS**

Carat Weight **2.52 CARATS**  
Color Grade **FANCY INTENSE PINK**  
Clarity Grade **SI 1**  
Cut Grade **EXCELLENT**



**ADDITIONAL GRADING INFORMATION**

Polish **EXCELLENT**  
Symmetry **EXCELLENT**  
Fluorescence **SLIGHT**  
Inscription(s) **(IGI) LG764628853**  
Comments: This Laboratory Grown Diamond was created by Chemical Vapor Deposition (CVD) growth process. Indications of post-growth treatment.



January 20, 2026  
IGI Report No LG764628853  
**ROUND BRILLIANT**  
**8.64 - 8.66 X 5.43 MM**  
**2.52 CARATS**  
**FANCY INTENSE PINK**  
Carat Weight  
Color Grade  
Clarity Grade  
Cut Grade  
Depth  
Table  
Girdle  
Medium To Slightly Thick (Faceted)  
Culet  
Polish  
Symmetry  
Fluorescence  
Inscription(s)  
**SI 1**  
**EXCELLENT**  
**62.7%**  
**57%**  
**Pointed**  
**EXCELLENT**  
**EXCELLENT**  
**SLIGHT**  
**(IGI) LG764628853**  
Comments: This Laboratory Grown Diamond was created by Chemical Vapor Deposition (CVD) growth process. Indications of post-growth treatment.

January 20, 2026  
IGI Report Number **LG764628853**  
Description **LABORATORY GROWN DIAMOND**  
Shape and Cutting Style **ROUND BRILLIANT**  
Measurements **8.64 - 8.66 X 5.43 MM**

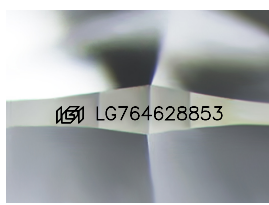
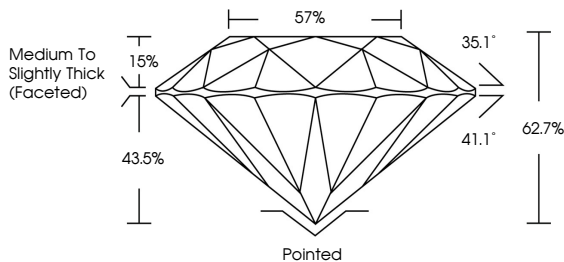
**GRADING RESULTS**

Carat Weight **2.52 CARATS**  
Color Grade **FANCY INTENSE PINK**  
Clarity Grade **SI 1**  
Cut Grade **EXCELLENT**

**ADDITIONAL GRADING INFORMATION**

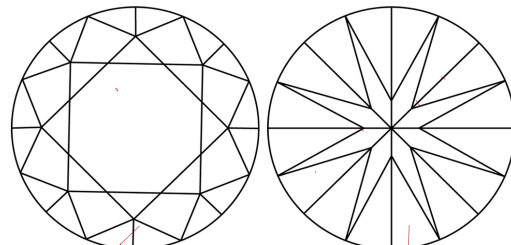
Polish **EXCELLENT**  
Symmetry **EXCELLENT**  
Fluorescence **SLIGHT**  
Inscription(s) **(IGI) LG764628853**  
Comments: This Laboratory Grown Diamond was created by Chemical Vapor Deposition (CVD) growth process. Indications of post-growth treatment.

**PROPORTIONS**



Sample Image Used

**CLARITY CHARACTERISTICS**



**KEY TO SYMBOLS**

Red symbols indicate internal characteristics.  
Green symbols indicate external characteristics.

**COLOR**

D	E	F	G	H	I	J	Faint	Very Light	Light
---	---	---	---	---	---	---	-------	------------	-------

**CLARITY**

FL	IF	VS <sup>1-2</sup>	VS <sup>1-2</sup>	SI <sup>1-2</sup>	I <sup>1-3</sup>
Flawless	Internally Flawless	Very Very Slightly Included	Very Slightly Included	Slightly Included	Included

