



ELECTRONIC COPY

LG764628847
Report verification at igi.org



January 20, 2026
IGI Report Number **LG764628847**
Description **LABORATORY GROWN DIAMOND**
Shape and Cutting Style **ROUND BRILLIANT**
Measurements **8.48 - 8.50 X 5.22 MM**
GRADING RESULTS
Carat Weight **2.36 CARATS**
Color Grade **FANCY VIVID GREEN**
Clarity Grade **VS 2**
Cut Grade **EXCELLENT**

January 20, 2026
IGI Report Number **LG764628847**
Description **LABORATORY GROWN DIAMOND**
Shape and Cutting Style **ROUND BRILLIANT**
Measurements **8.48 - 8.50 X 5.22 MM**

GRADING RESULTS

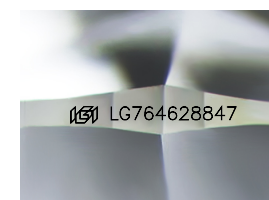
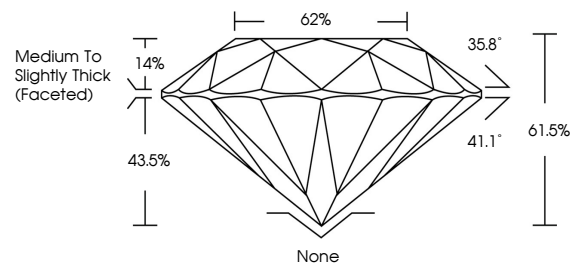
Carat Weight **2.36 CARATS**
Color Grade **FANCY VIVID GREEN**
Clarity Grade **VS 2**
Cut Grade **EXCELLENT**

ADDITIONAL GRADING INFORMATION

Polish **EXCELLENT**
Symmetry **EXCELLENT**
Fluorescence **NONE**
Inscription(s) **IGI LG764628847**

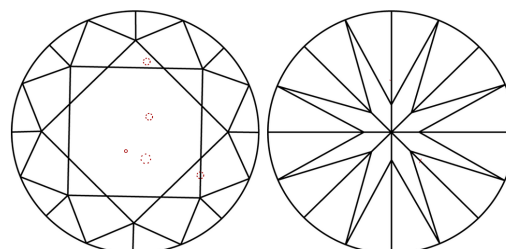
Comments: This Laboratory Grown Diamond was created by Chemical Vapor Deposition (CVD) growth process.
Indications of post-growth treatment.

PROPORTIONS



Sample Image Used

CLARITY CHARACTERISTICS



KEY TO SYMBOLS

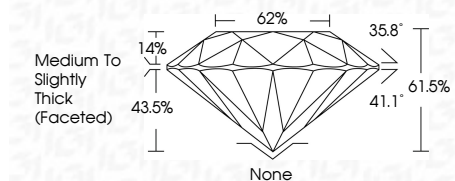
Red symbols indicate internal characteristics.
Green symbols indicate external characteristics.

COLOR

D E F G H I J Faint Very Light Light

CLARITY

FL	IF	VS ¹⁻²	VS ¹⁻²	SI ¹⁻²	I ¹⁻³
Flawless	Internally Flawless	Very Very Slightly Included	Very Slightly Included	Slightly Included	Included



ADDITIONAL GRADING INFORMATION

Polish **EXCELLENT**
Symmetry **EXCELLENT**
Fluorescence **NONE**
Inscription(s) **IGI LG764628847**
Comments: This Laboratory Grown Diamond was created by Chemical Vapor Deposition (CVD) growth process.
Indications of post-growth treatment.



IGI



January 20, 2026
IGI Report No **LG764628847**
ROUND BRILLIANT
8.48 - 8.50 X 5.22 MM
Carat Weight **2.36 CARATS**
Color Grade **FANCY VIVID GREEN**
Clarity Grade **VS 2**
Cut Grade **EXCELLENT**
Depth **61.5%**
Table **62%**
Girdle **Medium To Slightly Thick (Faceted)**
Culet **None**
Polish **EXCELLENT**
Symmetry **EXCELLENT**
Fluorescence **NONE**
Inscription(s) **IGI LG764628847**
Comments: This Laboratory Grown Diamond was created by Chemical Vapor Deposition (CVD) growth process.
Indications of post-growth treatment.