



ELECTRONIC COPY

LG764628825
Report verification at igi.org



January 20, 2026
IGI Report Number **LG764628825**
Description **LABORATORY GROWN DIAMOND**
Shape and Cutting Style **PENTAGONAL MODIFIED BRILLIANT**
Measurements **7.97 X 8.80 X 4.13 MM**
GRADING RESULTS
Carat Weight **2.02 CARATS**
Color Grade **FANCY INTENSE PINKISH ORANGE**
Clarity Grade **SI 1**

LABORATORY GROWN DIAMOND REPORT

January 20, 2026
IGI Report Number **LG764628825**
Description **LABORATORY GROWN DIAMOND**
Shape and Cutting Style **PENTAGONAL MODIFIED BRILLIANT**
Measurements **7.97 X 8.80 X 4.13 MM**

GRADING RESULTS

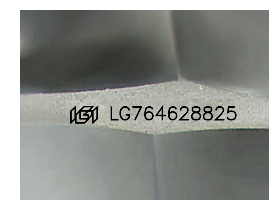
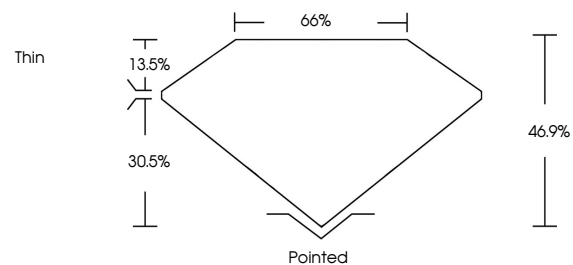
Carat Weight **2.02 CARATS**
Color Grade **FANCY INTENSE PINKISH ORANGE**
Clarity Grade **SI 1**

ADDITIONAL GRADING INFORMATION

Polish **VERY GOOD**
Symmetry **EXCELLENT**
Fluorescence **SLIGHT**
Inscription(s) **(IGI) LG764628825**

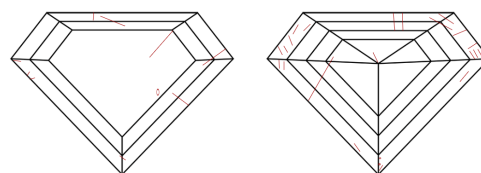
Comments: This Laboratory Grown Diamond was created by Chemical Vapor Deposition (CVD) growth process.
Indications of post-growth treatment.

PROPORTIONS



Sample Image Used

CLARITY CHARACTERISTICS



KEY TO SYMBOLS

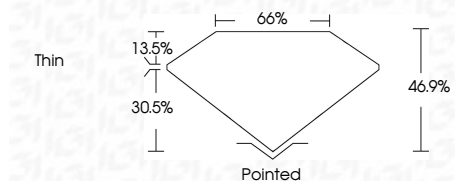
Red symbols indicate internal characteristics.
Green symbols indicate external characteristics.

COLOR

D E F G H I J Faint Very Light Light

CLARITY

FL	IF	VS ¹⁻²	VS ¹⁻²	SI ¹⁻²	I ¹⁻³
Flawless	Internally Flawless	Very Very Slightly Included	Very Slightly Included	Slightly Included	Included



ADDITIONAL GRADING INFORMATION

Polish **VERY GOOD**
Symmetry **EXCELLENT**
Fluorescence **SLIGHT**
Inscription(s) **(IGI) LG764628825**
Comments: This Laboratory Grown Diamond was created by Chemical Vapor Deposition (CVD) growth process.
Indications of post-growth treatment.



January 20, 2026
IGI Report No LG764628825
PENTAGONAL MODIFIED BRILLIANT
2.02 CARATS
Carat Weight
Color Grade **FANCY INTENSE PINKISH ORANGE**
Clarity Grade **SI 1**
Depth **46.9%**
Table **65%**
Girdle **Thin**
Culet **Pointed**
Polish **VERY GOOD**
Symmetry **EXCELLENT**
Fluorescence **SLIGHT**
Inscription(s) **(IGI) LG764628825**
Comments: This Laboratory Grown Diamond was created by Chemical Vapor Deposition (CVD) growth process.
Indications of post-growth treatment.