



January 16, 2026

IGI Report Number **LG764628807**

**ROUND BRILLIANT
LABORATORY GROWN DIAMOND
6.09 - 6.11 X 3.67 MM**

Carat Weight	0.84 CARAT
Color Grade	FANCY PINK
Clarity Grade	VS 2
Cut Grade	IDEAL
Polish	EXCELLENT
Symmetry	EXCELLENT
Fluorescence	SLIGHT
Inscription(s)	IGI LG764628807

Comments: This Laboratory Grown Diamond was created by Chemical Vapor Deposition (CVD) growth process. Indications of post-growth treatment.

LABORATORY GROWN DIAMOND REPORT

January 16, 2026

IGI Report Number

LG764628807

Description

LABORATORY GROWN DIAMOND

Shape and Cutting Style

ROUND BRILLIANT

Measurements

6.09 - 6.11 X 3.67 MM

GRADING RESULTS

Carat Weight

0.84 CARAT

Color Grade

FANCY PINK

Clarity Grade

VS 2

Cut Grade

IDEAL

ADDITIONAL GRADING INFORMATION

Polish

EXCELLENT

Symmetry

EXCELLENT

Fluorescence

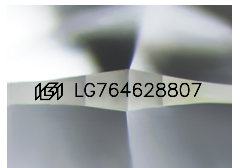
SLIGHT

Inscription(s)

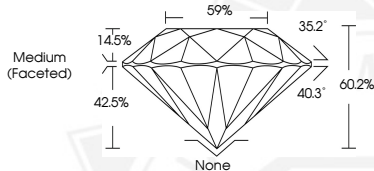
IGI LG764628807

Comments: This Laboratory Grown Diamond was created by Chemical Vapor Deposition (CVD) growth process.

Indications of post-growth treatment.



Sample Image Used



January 16, 2026

IGI Report Number **LG764628807**

**ROUND BRILLIANT
LABORATORY GROWN DIAMOND
6.09 - 6.11 X 3.67 MM**

Carat Weight	0.84 CARAT
Color Grade	FANCY PINK
Clarity Grade	VS 2
Cut Grade	IDEAL
Polish	EXCELLENT
Symmetry	EXCELLENT
Fluorescence	SLIGHT
Inscription(s)	IGI LG764628807

Comments: This Laboratory Grown Diamond was created by Chemical Vapor Deposition (CVD) growth process. Indications of post-growth treatment.



THIS DOCUMENT WAS PRODUCED WITH THE FOLLOWING SECURITY MEASURES: SPECIAL DOCUMENT PAPER, INK SCREENS, WATERMARK, BACKGROUND DESIGNS, HOLOGRAM AND OTHER SECURITY FEATURES NOT LISTED AND DO EXCEED DOCUMENT SECURITY INDUSTRY GUIDELINES.