



January 19, 2026

IGI Report Number **LG764628805**

ROUND BRILLIANT

LABORATORY GROWN DIAMOND

5.78 - 5.81 X 3.49 MM

Carat Weight **0.72 CARAT**

Color Grade **FANCY VIVID BLUE**

Clarity Grade **SI 2**

Cut Grade **EXCELLENT**

Polish **EXCELLENT**

Symmetry **EXCELLENT**

Fluorescence **NONE**

Inscription(s) **IGI LG764628805**

Comments: This Laboratory Grown Diamond was created by Chemical Vapor Deposition (CVD) growth process. Indications of post-growth treatment.

LABORATORY GROWN DIAMOND REPORT

January 19, 2026

IGI Report Number

LG764628805

Description

LABORATORY GROWN DIAMOND

Shape and Cutting Style

ROUND BRILLIANT

Measurements

5.78 - 5.81 X 3.49 MM

GRADING RESULTS

Carat Weight

0.72 CARAT

Color Grade

FANCY VIVID BLUE

Clarity Grade

SI 2

Cut Grade

EXCELLENT

ADDITIONAL GRADING INFORMATION

Polish

EXCELLENT

Symmetry

EXCELLENT

Fluorescence

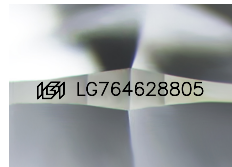
NONE

Inscription(s)

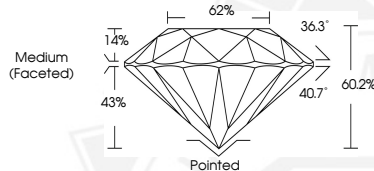
IGI LG764628805

Comments: This Laboratory Grown Diamond was created by Chemical Vapor Deposition (CVD) growth process.

Indications of post-growth treatment.



Sample Image Used



January 19, 2026

IGI Report Number **LG764628805**

ROUND BRILLIANT

LABORATORY GROWN DIAMOND

5.78 - 5.81 X 3.49 MM

Carat Weight **0.72 CARAT**

Color Grade **FANCY VIVID BLUE**

Clarity Grade **SI 2**

Cut Grade **EXCELLENT**

Polish **EXCELLENT**

Symmetry **EXCELLENT**

Fluorescence **NONE**

Inscription(s) **IGI LG764628805**

Comments: This Laboratory Grown Diamond was created by Chemical Vapor Deposition (CVD) growth process. Indications of post-growth treatment.



THIS DOCUMENT WAS PRODUCED WITH THE FOLLOWING SECURITY MEASURES: SPECIAL DOCUMENT PAPER, INK SCREENS, WATERMARK, BACKGROUND DESIGNS, HOLOGRAM AND OTHER SECURITY FEATURES NOT LISTED AND DO EXCEED DOCUMENT SECURITY INDUSTRY GUIDELINES.