



ELECTRONIC COPY

LG764623387
Report verification at igi.org



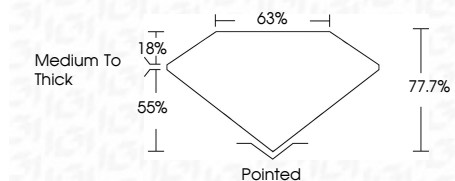
January 13, 2026
IGI Report Number **LG764623387**
Description **LABORATORY GROWN DIAMOND**

Shape and Cutting Style **CUT CORNERED
RECTANGULAR MODIFIED
BRILLIANT**

Measurements **7.45 X 5.34 X 4.15 MM**

GRADING RESULTS

Carat Weight **1.68 CARAT**
Color Grade **FANCY INTENSE YELLOW**
Clarity Grade **VS 2**



ADDITIONAL GRADING INFORMATION

Polish **VERY GOOD**
Symmetry **VERY GOOD**
Fluorescence **NONE**

Inscription(s) **IGI LG764623387**

Comments: This Laboratory Grown Diamond was created by Chemical Vapor Deposition (CVD) growth process.



January 13, 2026
IGI Report No LG764623387
CUT CORNERED RECT. MODIFIED BRILLIANT
7.45 X 5.34 X 4.15 MM
1.68 CARAT
FANCY INTENSE YELLOW
VS 2
77.7%
63%
Medium To Thick
Pointed
Polish **VERY GOOD**
Symmetry **VERY GOOD**
Fluorescence **NONE**
Inscription(s) **IGI LG764623387**

Comments: This Laboratory Grown Diamond was created by Chemical Vapor Deposition (CVD) growth process.

LABORATORY GROWN DIAMOND REPORT

January 13, 2026
IGI Report Number **LG764623387**
Description **LABORATORY GROWN DIAMOND**
Shape and Cutting Style **CUT CORNERED RECTANGULAR
MODIFIED BRILLIANT**
Measurements **7.45 X 5.34 X 4.15 MM**

GRADING RESULTS

Carat Weight **1.68 CARAT**
Color Grade **FANCY INTENSE YELLOW**
Clarity Grade **VS 2**

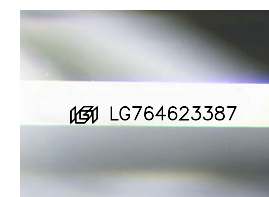
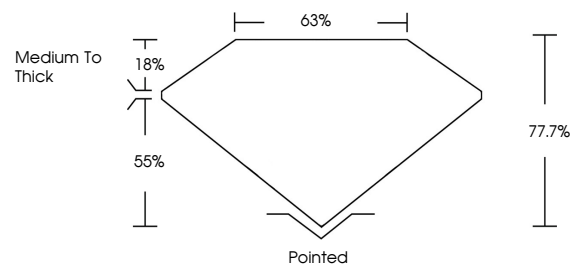
ADDITIONAL GRADING INFORMATION

Polish **VERY GOOD**
Symmetry **VERY GOOD**
Fluorescence **NONE**

Inscription(s) **IGI LG764623387**

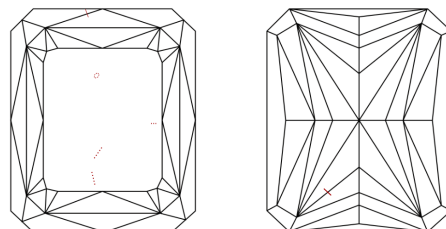
Comments: This Laboratory Grown Diamond was created by Chemical Vapor Deposition (CVD) growth process.

PROPORTIONS



Sample Image Used

CLARITY CHARACTERISTICS



KEY TO SYMBOLS

Red symbols indicate internal characteristics.
Green symbols indicate external characteristics.

COLOR

D E F G H I J Faint Very Light Light

CLARITY

FL	IF	VS ¹⁻²	VS ¹⁻²	SI ¹⁻²	I ¹⁻³
Flawless	Internally Flawless	Very Very Slightly Included	Very Slightly Included	Slightly Included	Included

