



ELECTRONIC COPY

LG764623382
Report verification at igi.org



January 12, 2026
IGI Report Number **LG764623382**
Description **LABORATORY GROWN DIAMOND**
Shape and Cutting Style **CUT CORNERED
RECTANGULAR MIXED CUT**
Measurements **6.62 X 5.08 X 3.28 MM**
GRADING RESULTS
Carat Weight **1.06 CARAT**
Color Grade **FANCY VIVID ORANGY PINK**
Clarity Grade **VVS 2**

LABORATORY GROWN DIAMOND REPORT

January 12, 2026
IGI Report Number **LG764623382**
Description **LABORATORY GROWN DIAMOND**
Shape and Cutting Style **CUT CORNERED RECTANGULAR
MIXED CUT**
Measurements **6.62 X 5.08 X 3.28 MM**

GRADING RESULTS

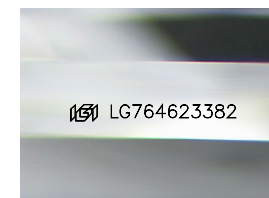
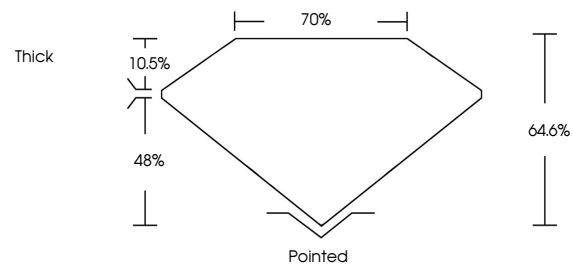
Carat Weight **1.06 CARAT**
Color Grade **FANCY VIVID ORANGY PINK**
Clarity Grade **VVS 2**

ADDITIONAL GRADING INFORMATION

Polish **EXCELLENT**
Symmetry **EXCELLENT**
Fluorescence **STRONG**
Inscription(s) **IGI LG764623382**

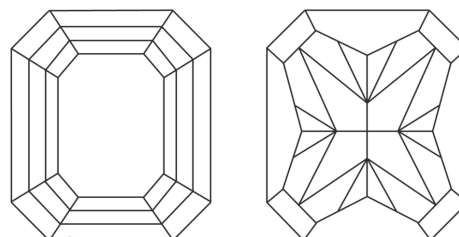
Comments: This Laboratory Grown Diamond was created by Chemical Vapor Deposition (CVD) growth process. Indications of post-growth treatment.

PROPORTIONS



Sample Image Used

CLARITY CHARACTERISTICS



KEY TO SYMBOLS

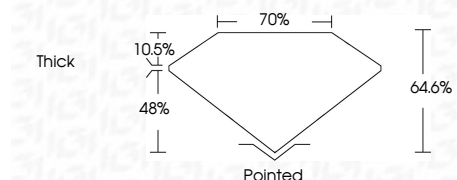
Red symbols indicate internal characteristics.
Green symbols indicate external characteristics.

COLOR

D E F G H I J Faint Very Light Light

CLARITY

FL	IF	VVS ¹⁻²	VS ¹⁻²	SI ¹⁻²	I ¹⁻³
Flawless	Internally Flawless	Very Very Slightly Included	Very Slightly Included	Slightly Included	Included



ADDITIONAL GRADING INFORMATION

Polish **EXCELLENT**
Symmetry **EXCELLENT**
Fluorescence **STRONG**
Inscription(s) **IGI LG764623382**
Comments: This Laboratory Grown Diamond was created by Chemical Vapor Deposition (CVD) growth process. Indications of post-growth treatment.



IGI



January 12, 2026
IGI Report No **LG764623382**
CUT CORNERED RECT. MIXED CUT
6.62 X 5.08 X 3.28 MM
Carat Weight **1.06 CARAT**
Color Grade **FANCY VIVID ORANGY PINK**
Clarity Grade **VVS 2**
Depth **64.6%**
Table **70%**
Girdle **Thick**
Culet **Pointed**
Polish **EXCELLENT**
Symmetry **EXCELLENT**
Fluorescence **STRONG**
Inscription(s) **IGI LG764623382**

Comments: This Laboratory Grown Diamond was created by Chemical Vapor Deposition (CVD) growth process. Indications of post-growth treatment.