



ELECTRONIC COPY

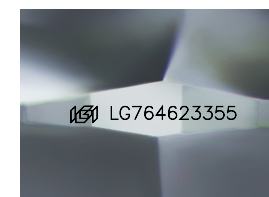
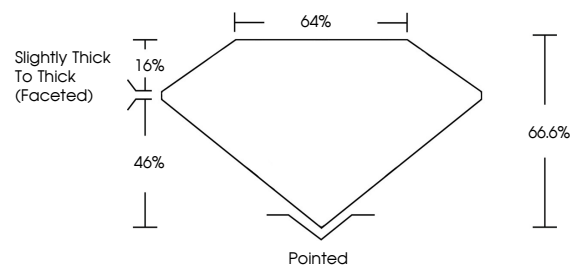
LG764623355
Report verification at igi.org



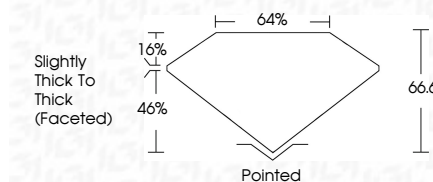
January 13, 2026
IGI Report Number **LG764623355**
Description **LABORATORY GROWN DIAMOND**
Shape and Cutting Style **CUSHION MODIFIED BRILLIANT**
Measurements **9.58 X 6.92 X 4.61 MM**
GRADING RESULTS
Carat Weight **2.52 CARATS**
Color Grade **E**
Clarity Grade **VS 1**

January 13, 2026
IGI Report Number **LG764623355**
Description **LABORATORY GROWN DIAMOND**
Shape and Cutting Style **CUSHION MODIFIED BRILLIANT**
Measurements **9.58 X 6.92 X 4.61 MM**
GRADING RESULTS
Carat Weight **2.52 CARATS**
Color Grade **E**
Clarity Grade **VS 1**

PROPORTIONS



Sample Image Used



ADDITIONAL GRADING INFORMATION

Polish **EXCELLENT**
Symmetry **EXCELLENT**
Fluorescence **NONE**
Inscription(s) **IGI LG764623355**

Comments: This Laboratory Grown Diamond was created by Chemical Vapor Deposition (CVD) growth process. Type IIa

ADDITIONAL GRADING INFORMATION

Polish **EXCELLENT**
Symmetry **EXCELLENT**
Fluorescence **NONE**
Inscription(s) **IGI LG764623355**
Comments: This Laboratory Grown Diamond was created by Chemical Vapor Deposition (CVD) growth process. Type IIa

COLOR

D E F G H I J Faint Very Light Light

CLARITY

FL	IF	VS ¹⁻²	VS ¹⁻²	SI ¹⁻²	I ¹⁻³
Flawless	Internally Flawless	Very Very Slightly Included	Very Slightly Included	Slightly Included	Included



IGI



January 13, 2026
IGI Report No **LG764623355**
CUSHION MODIFIED BRILLIANT
9.58 X 6.92 X 4.61 MM
2.52 CARATS
E
VS 1
66.6%
46%
Slightly Thick To Thick (Faceted)
Pointed
EXCELLENT
EXCELLENT
NONE
IGI LG764623355

Comments: This Laboratory Grown Diamond was created by Chemical Vapor Deposition (CVD) growth process. Type IIa