



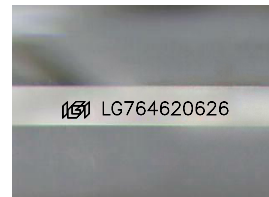
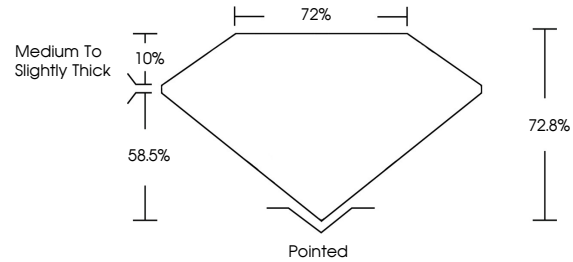
**INTERNATIONAL
GEMOLOGICAL
INSTITUTE**

ELECTRONIC COPY

LABORATORY GROWN DIAMOND REPORT

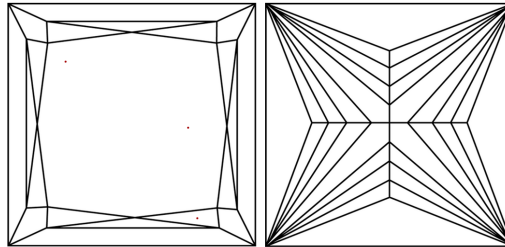
LG764620626
Report verification at igi.org

PROPORTIONS



Sample Image Used

CLARITY CHARACTERISTICS



KEY TO SYMBOLS

Red symbols indicate internal characteristics.
Green symbols indicate external characteristics.

COLOR

D E F G H I J Faint Very Light Light

CLARITY

FL	IF	VVS ¹⁻²	VS ¹⁻²	SI ¹⁻²	I ¹⁻³
Flawless	Internally Flawless	Very Very Slightly Included	Very Slightly Included	Slightly Included	Included

LABORATORY GROWN DIAMOND REPORT



January 9, 2026

IGI Report Number LG764620626

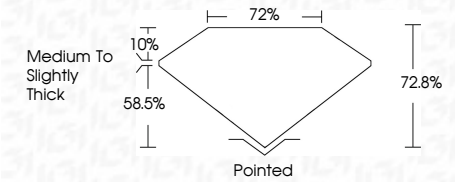
Description **LABORATORY GROWN DIAMOND**Shape and Cutting Style **PRINCESS CUT**

Measurements **6.21 X 6.11 X 4.45 MM**

GRADING RESULTS

Carat Weight **1.49 CARAT**

Color Grade **G**

Clarity Grade VVS 2

ADDITIONAL GRADING INFORMATION

Polish **EXCELLENT**Symmetry **EXCELLENT**

Fluorescence	NONE
--------------	------

Inscription(s) LG764620626

Comments: This Laboratory Grown Diamond was created by Chemical Vapor Deposition (CVD) growth process.
Type IIa



IGI



© IGI 2020, International Gemological Institute

FD - 10 20

www.igi.org

THIS DOCUMENT WAS PRODUCED WITH THE FOLLOWING SECURITY MEASURES: SPECIAL DOCUMENT PAPER, INK SCREENS, WATERMARK BACKGROUND DESIGNS, HOLOGRAM AND OTHER SECURITY FEATURES NOT LISTED AND DO EXCEED DOCUMENT SECURITY INDUSTRY GUIDELINES.

January 9, 2026
IGI Report No LG764620626

IGI Report No. I57/64020526		1.49 CARAT	
6.21 X 6.11 X 4.45 MM		VS 2	
Carat Weight		Color Grade	72.8%
Clarity Grade		Tablet	72%
Depth		Grade	Medium To Slightly Thick
Culet		Polish	Excellent
Symmetry		Fluorescence	None
Inscriptions			IGI I57/64020526

Comments:
This Laboratory Grown Diamond was created by Chemical Vapor Deposition (CVD) growth process.
Type IIa