



ELECTRONIC COPY

LG764617435
Report verification at igi.org



February 3, 2026

IGI Report Number **LG764617435**

Description **LABORATORY GROWN DIAMOND**

Shape and Cutting Style **EMERALD CUT**

Measurements **9.29 X 6.44 X 4.20 MM**

GRADING RESULTS

Carat Weight **2.54 CARATS**

Color Grade **FANCY VIVID BLUE**

Clarity Grade **VVS 2**

LABORATORY GROWN DIAMOND REPORT

February 3, 2026

IGI Report Number **LG764617435**

Description **LABORATORY GROWN DIAMOND**

Shape and Cutting Style **EMERALD CUT**

Measurements **9.29 X 6.44 X 4.20 MM**

GRADING RESULTS

Carat Weight **2.54 CARATS**

Color Grade **FANCY VIVID BLUE**

Clarity Grade **VVS 2**

ADDITIONAL GRADING INFORMATION

Polish **EXCELLENT**

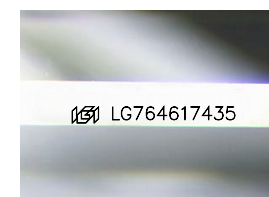
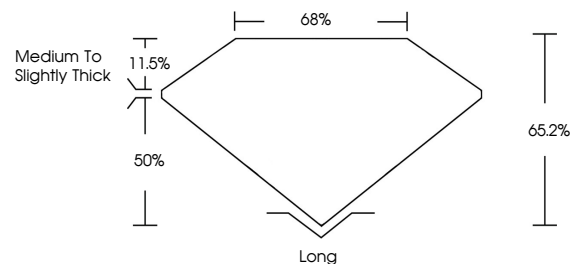
Symmetry **EXCELLENT**

Fluorescence **NONE**

Inscription(s) **LG764617435**

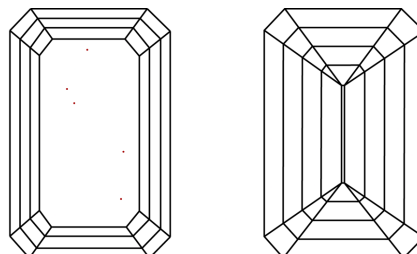
Comments: This Laboratory Grown Diamond was created by Chemical Vapor Deposition (CVD) growth process. Indications of post-growth treatment.

PROPORTIONS



Sample Image Used

CLARITY CHARACTERISTICS



KEY TO SYMBOLS

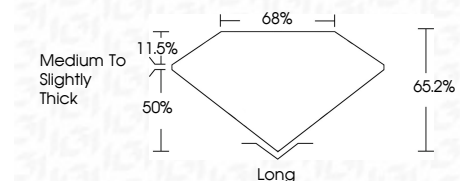
Red symbols indicate internal characteristics.
Green symbols indicate external characteristics.

COLOR

D E F G H I J Faint Very Light Light

CLARITY

FL	IF	VVS ¹⁻²	VS ¹⁻²	SI ¹⁻²	I ¹⁻³
Flawless	Internally Flawless	Very Very Slightly Included	Very Slightly Included	Slightly Included	Included



ADDITIONAL GRADING INFORMATION

Polish **EXCELLENT**

Symmetry **EXCELLENT**

Fluorescence **NONE**

Inscription(s) **LG764617435**

Comments: This Laboratory Grown Diamond was created by Chemical Vapor Deposition (CVD) growth process. Indications of post-growth treatment.



February 3, 2026
IGI Report No LG764617435
EMERALD CUT

2.54 CARATS
Carat Weight
FANCY VIVID BLUE
Color Grade

VVS 2
Clarity Grade
65.2%
Table
68%
Girdle
Medium to Slightly Thick
Culet
Long
Polish
EXCELLENT
Symmetry
EXCELLENT
Fluorescence
NONE
Inscription(s)
 LG764617435

Comments: This Laboratory Grown Diamond was created by Chemical Vapor Deposition (CVD) growth process. Indications of post-growth treatment.