



ELECTRONIC COPY

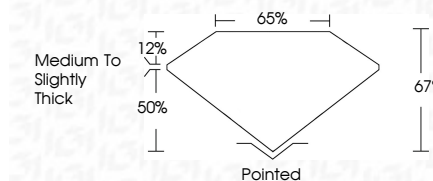
LG764615450
Report verification at igi.org



January 24, 2026
IGI Report Number **LG764615450**
Description **LABORATORY GROWN DIAMOND**
Shape and Cutting Style **CUT CORNERED
RECTANGULAR MODIFIED
BRILLIANT**
Measurements **8.51 X 6.13 X 4.11 MM**

GRADING RESULTS

Carat Weight **2.03 CARATS**
Color Grade **FANCY VIVID YELLOW**
Clarity Grade **VS 1**



ADDITIONAL GRADING INFORMATION

Polish **VERY GOOD**
Symmetry **VERY GOOD**
Fluorescence **NONE**
Inscription(s) **(LGI) LG764615450**
Comments: This Laboratory Grown Diamond was created by Chemical Vapor Deposition (CVD) growth process.



January 24, 2026
IGI Report No LG764615450
CUT CORNERED RECT. MODIFIED BRILLIANT
8.51 X 6.13 X 4.11 MM
2.03 CARATS
FANCY VIVID YELLOW
VS 1
Medium to Slightly Thick
Pointed
VERY GOOD
VERY GOOD
NONE
(LGI) LG764615450
Comments: This Laboratory Grown Diamond was created by Chemical Vapor Deposition (CVD) growth process.

LABORATORY GROWN DIAMOND REPORT

January 24, 2026
IGI Report Number **LG764615450**
Description **LABORATORY GROWN DIAMOND**
Shape and Cutting Style **CUT CORNERED RECTANGULAR
MODIFIED BRILLIANT**
Measurements **8.51 X 6.13 X 4.11 MM**

GRADING RESULTS

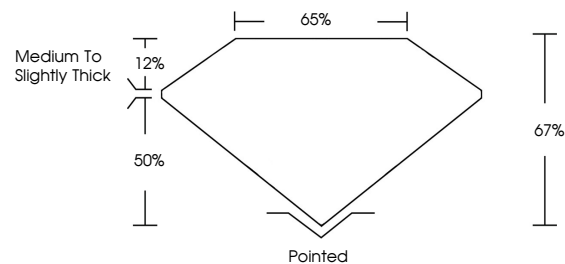
Carat Weight **2.03 CARATS**
Color Grade **FANCY VIVID YELLOW**
Clarity Grade **VS 1**

ADDITIONAL GRADING INFORMATION

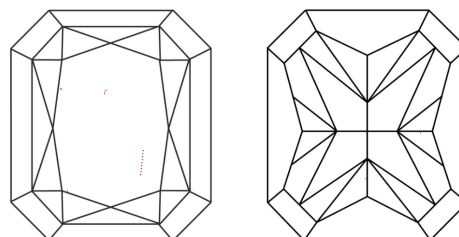
Polish **VERY GOOD**
Symmetry **VERY GOOD**
Fluorescence **NONE**
Inscription(s) **(LGI) LG764615450**

Comments: This Laboratory Grown Diamond was created by Chemical Vapor Deposition (CVD) growth process.

PROPORTIONS

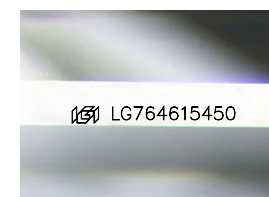


CLARITY CHARACTERISTICS



KEY TO SYMBOLS

Red symbols indicate internal characteristics.
Green symbols indicate external characteristics.



Sample Image Used

COLOR

D E F G H I J Faint Very Light Light

CLARITY

FL	IF	VS ¹⁻²	VS ¹⁻²	SI ¹⁻²	I ¹⁻³
Flawless	Internally Flawless	Very Very Slightly Included	Very Slightly Included	Slightly Included	Included

