



**ELECTRONIC COPY**

LG764615023  
Report verification at igi.org



January 19, 2026

IGI Report Number **LG764615023**

Description **LABORATORY GROWN DIAMOND**

Shape and Cutting Style **ROUND ROSE CUT**

Measurements **16.34 - 16.41 X 4.39 MM**

**GRADING RESULTS**

Carat Weight **11.01 CARATS**

Color Grade **F**

Clarity Grade **VVS 2**

January 19, 2026  
IGI Report Number **LG764615023**  
Description **LABORATORY GROWN DIAMOND**  
Shape and Cutting Style **ROUND ROSE CUT**  
Measurements **16.34 - 16.41 X 4.39 MM**

**GRADING RESULTS**

Carat Weight **11.01 CARATS**

Color Grade **F**

Clarity Grade **VVS 2**

**ADDITIONAL GRADING INFORMATION**

Polish **EXCELLENT**

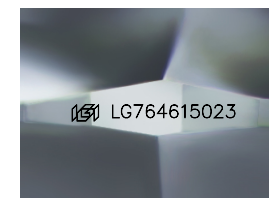
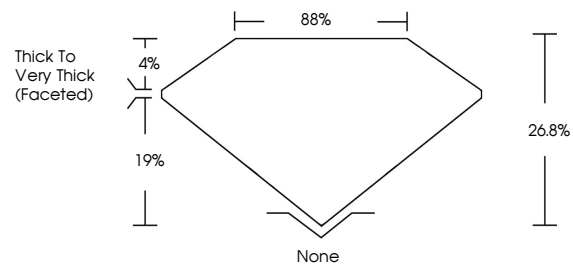
Symmetry **EXCELLENT**

Fluorescence **NONE**

Inscription(s) **IGI LG764615023**

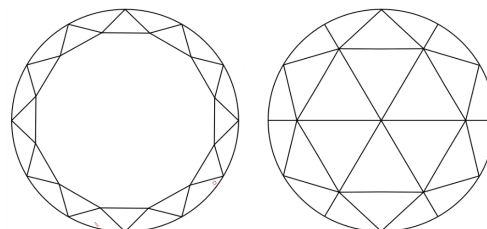
Comments: This Laboratory Grown Diamond was created by Chemical Vapor Deposition (CVD) growth process. Type IIa

**PROPORTIONS**



Sample Image Used

**CLARITY CHARACTERISTICS**



**KEY TO SYMBOLS**

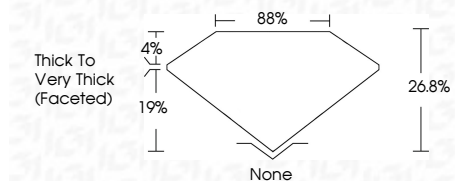
Red symbols indicate internal characteristics.  
Green symbols indicate external characteristics.

**COLOR**

D E F G H I J Faint Very Light Light

**CLARITY**

FL	IF	VVS <sup>1-2</sup>	VS <sup>1-2</sup>	SI <sup>1-2</sup>	I <sup>1-3</sup>
Flawless	Internally Flawless	Very Very Slightly Included	Very Slightly Included	Slightly Included	Included



**ADDITIONAL GRADING INFORMATION**

Polish **EXCELLENT**

Symmetry **EXCELLENT**

Fluorescence **NONE**

Inscription(s) **IGI LG764615023**

Comments: This Laboratory Grown Diamond was created by Chemical Vapor Deposition (CVD) growth process. Type IIa



**IGI**



January 19, 2026  
IGI Report No LG764615023  
**ROUND ROSE CUT**  
16.34 - 16.41 X 4.39 MM  
11.01 CARATS  
Color Grade **F**  
Clarity Grade **VVS 2**  
Depth **26.8%**  
Table **88%**  
Girdle **Thick to Very Thick (Faceted)**  
Culet **None**  
Polish **EXCELLENT**  
Symmetry **EXCELLENT**  
Fluorescence **NONE**  
Inscription(s) **IGI LG764615023**  
Comments: This Laboratory Grown Diamond was created by Chemical Vapor Deposition (CVD) growth process. Type IIa