



**ELECTRONIC COPY**

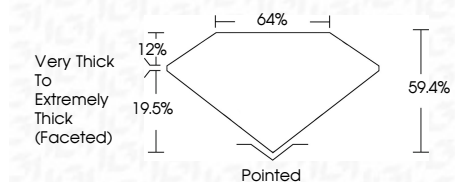
LG764615018  
Report verification at igi.org



January 22, 2026  
IGI Report Number **LG764615018**  
Description **LABORATORY GROWN DIAMOND**  
Shape and Cutting Style **HEART MODIFIED BRILLIANT**  
Measurements **7.78 X 9.11 X 5.41 MM**

**GRADING RESULTS**

Carat Weight **3.04 CARATS**  
Color Grade **FANCY VIVID PINK**  
Clarity Grade **VS 1**

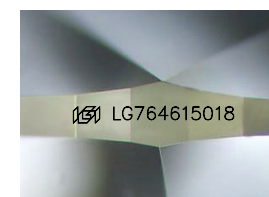


**ADDITIONAL GRADING INFORMATION**

Polish **VERY GOOD**  
Symmetry **EXCELLENT**  
Fluorescence **SLIGHT**  
Inscription(s) **IGI LG764615018**  
Comments: This Laboratory Grown Diamond was created by Chemical Vapor Deposition (CVD) growth process. Indications of post-growth treatment.

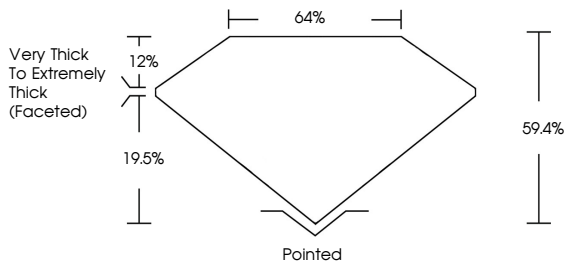


January 22, 2026  
IGI Report No LG764615018  
**HEART MODIFIED BRILLIANT**  
3.04 CARATS  
Carat Weight  
Color Grade **FANCY VIVID PINK**  
Clarity Grade **VS 1**  
Depth **59.4%**  
Table **12%**  
Girdle **Very Thick to Extremely Thick (Faceted)**  
Culet **Pointed**  
Polish **VERY GOOD**  
Symmetry **EXCELLENT**  
Fluorescence **SLIGHT**  
Inscription(s) **IGI LG764615018**  
Comments: This Laboratory Grown Diamond was created by Chemical Vapor Deposition (CVD) growth process. Indications of post-growth treatment.

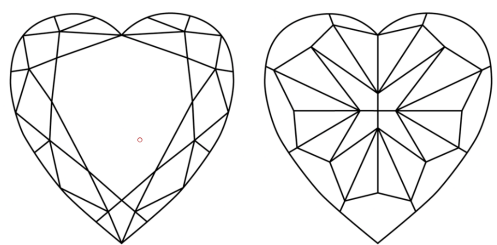


Sample Image Used

**PROPORTIONS**



**CLARITY CHARACTERISTICS**



**KEY TO SYMBOLS**

Red symbols indicate internal characteristics.  
Green symbols indicate external characteristics.

**COLOR**

D E F G H I J Faint Very Light Light

**CLARITY**

FL	IF	VS <sup>1-2</sup>	VS <sup>1-2</sup>	SI <sup>1-2</sup>	I <sup>1-3</sup>
Flawless	Internally Flawless	Very Very Slightly Included	Very Slightly Included	Slightly Included	Included

