



ELECTRONIC COPY

LG764615006
Report verification at igi.org



January 22, 2026
IGI Report Number **LG764615006**
Description **LABORATORY GROWN DIAMOND**
Shape and Cutting Style **CUSHION MODIFIED BRILLIANT**
Measurements **9.30 X 7.57 X 4.90 MM**
GRADING RESULTS
Carat Weight **3.10 CARATS**
Color Grade **FANCY INTENSE ORANGY PINK**
Clarity Grade **VS 1**

January 22, 2026
IGI Report Number **LG764615006**
Description **LABORATORY GROWN DIAMOND**
Shape and Cutting Style **CUSHION MODIFIED BRILLIANT**
Measurements **9.30 X 7.57 X 4.90 MM**

GRADING RESULTS

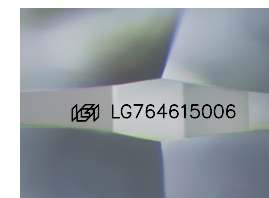
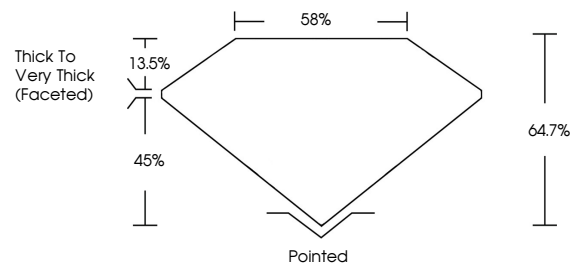
Carat Weight **3.10 CARATS**
Color Grade **FANCY INTENSE ORANGY PINK**
Clarity Grade **VS 1**

ADDITIONAL GRADING INFORMATION

Polish **EXCELLENT**
Symmetry **EXCELLENT**
Fluorescence **SLIGHT**
Inscription(s) **IGI LG764615006**

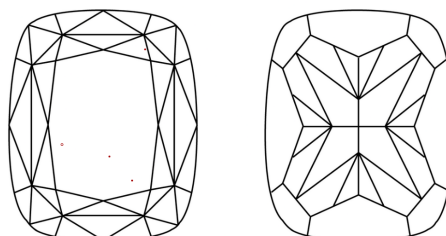
Comments: This Laboratory Grown Diamond was created by Chemical Vapor Deposition (CVD) growth process. Indications of post-growth treatment.

PROPORTIONS



Sample Image Used

CLARITY CHARACTERISTICS



KEY TO SYMBOLS

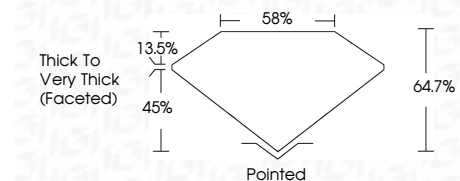
Red symbols indicate internal characteristics.
Green symbols indicate external characteristics.

COLOR

D E F G H I J Faint Very Light Light

CLARITY

FL	IF	VS ¹⁻²	VS ¹⁻²	SI ¹⁻²	I ¹⁻³
Flawless	Internally Flawless	Very Very Slightly Included	Very Slightly Included	Slightly Included	Included



ADDITIONAL GRADING INFORMATION

Polish **EXCELLENT**
Symmetry **EXCELLENT**
Fluorescence **SLIGHT**
Inscription(s) **IGI LG764615006**
Comments: This Laboratory Grown Diamond was created by Chemical Vapor Deposition (CVD) growth process. Indications of post-growth treatment.



January 22, 2026
IGI Report No LG764615006
CUSHION MODIFIED BRILLIANT
3.10 CARATS
Carat Weight
Color Grade
FANCY INTENSE ORANGY PINK
Clarity Grade
VS 1
Depth
9.30 X 7.57 X 4.90 MM
Table
64.7%
Girdle
85%
Thick to Very Thick (Faceted)
Culet
Pointed
Polish
EXCELLENT
Symmetry
EXCELLENT
Fluorescence
SLIGHT
Inscription(s)
IGI LG764615006
Comments: This Laboratory Grown Diamond was created by Chemical Vapor Deposition (CVD) growth process. Indications of post-growth treatment.