



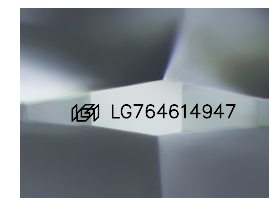
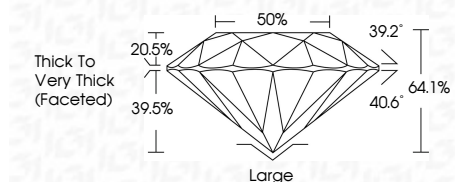
ELECTRONIC COPY

LG764614947
Report verification at igi.org



January 27, 2026
IGI Report Number **LG764614947**
Description **LABORATORY GROWN DIAMOND**
Shape and Cutting Style **OLD EUROPEAN CUT**
Measurements **7.91 - 8.04 X 5.11 MM**

GRADING RESULTS
Carat Weight **2.18 CARATS**
Color Grade **FANCY PINK**
Clarity Grade **VS 1**



Sample Image Used

ADDITIONAL GRADING INFORMATION
Polish **EXCELLENT**
Symmetry **EXCELLENT**
Fluorescence **SLIGHT**
Inscription(s) **IGI LG764614947**
Comments: This Laboratory Grown Diamond was created by Chemical Vapor Deposition (CVD) growth process. Indications of post-growth treatment.



January 27, 2026
IGI Report No. LG764614947
OLD EUROPEAN CUT
2.18 CARATS
FANCY PINK
Carat Weight
Color Grade
Clarity Grade
Depth
Table
Girdle
Thick to Very Thick (Faceted)
Large
EXCELLENT
EXCELLENT
SLIGHT
IGI LG764614947
Comments: This Laboratory Grown Diamond was created by Chemical Vapor Deposition (CVD) growth process. Indications of post-growth treatment.

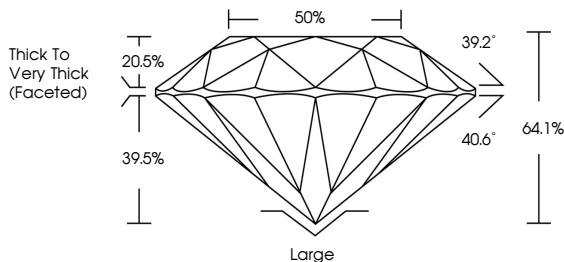
January 27, 2026
IGI Report Number **LG764614947**
Description **LABORATORY GROWN DIAMOND**
Shape and Cutting Style **OLD EUROPEAN CUT**
Measurements **7.91 - 8.04 X 5.11 MM**

GRADING RESULTS
Carat Weight **2.18 CARATS**
Color Grade **FANCY PINK**
Clarity Grade **VS 1**

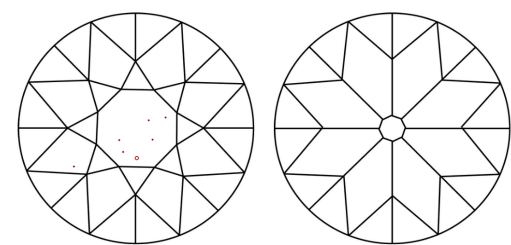
ADDITIONAL GRADING INFORMATION
Polish **EXCELLENT**
Symmetry **EXCELLENT**
Fluorescence **SLIGHT**
Inscription(s) **IGI LG764614947**

Comments: This Laboratory Grown Diamond was created by Chemical Vapor Deposition (CVD) growth process. Indications of post-growth treatment.

PROPORTIONS



CLARITY CHARACTERISTICS



KEY TO SYMBOLS
Red symbols indicate internal characteristics.
Green symbols indicate external characteristics.

COLOR

D	E	F	G	H	I	J	Faint	Very Light	Light
---	---	---	---	---	---	---	-------	------------	-------

CLARITY

FL	IF	VS ¹⁻²	VS ¹⁻²	SI ¹⁻²	I ¹⁻³
Flawless	Internally Flawless	Very Very Slightly Included	Very Slightly Included	Slightly Included	Included

