



ELECTRONIC COPY

LG764614945
Report verification at igi.org



January 27, 2026
IGI Report Number **LG764614945**
Description **LABORATORY GROWN DIAMOND**
Shape and Cutting Style **OLD EUROPEAN CUT**
Measurements **8.12 - 8.16 X 5.21 MM**
GRADING RESULTS
Carat Weight **2.36 CARATS**
Color Grade **FANCY LIGHT PINK**
Clarity Grade **VS 1**

January 27, 2026
IGI Report Number **LG764614945**
Description **LABORATORY GROWN DIAMOND**
Shape and Cutting Style **OLD EUROPEAN CUT**
Measurements **8.12 - 8.16 X 5.21 MM**

GRADING RESULTS

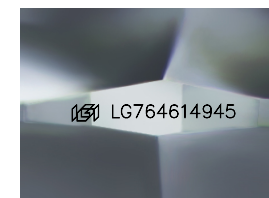
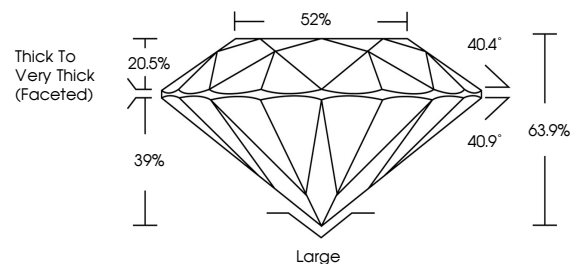
Carat Weight **2.36 CARATS**
Color Grade **FANCY LIGHT PINK**
Clarity Grade **VS 1**

ADDITIONAL GRADING INFORMATION

Polish **EXCELLENT**
Symmetry **EXCELLENT**
Fluorescence **SLIGHT**
Inscription(s) **IGI LG764614945**

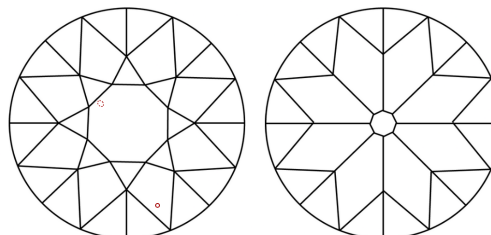
Comments: This Laboratory Grown Diamond was created by Chemical Vapor Deposition (CVD) growth process.
Indications of post-growth treatment.

PROPORTIONS



Sample Image Used

CLARITY CHARACTERISTICS



KEY TO SYMBOLS

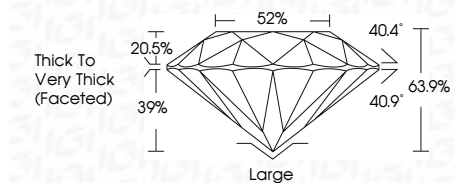
Red symbols indicate internal characteristics.
Green symbols indicate external characteristics.

COLOR

D E F G H I J Faint Very Light Light

CLARITY

FL	IF	VS ¹⁻²	VS ¹⁻²	SI ¹⁻²	I ¹⁻³
Flawless	Internally Flawless	Very Very Slightly Included	Very Slightly Included	Slightly Included	Included



ADDITIONAL GRADING INFORMATION

Polish **EXCELLENT**
Symmetry **EXCELLENT**
Fluorescence **SLIGHT**
Inscription(s) **IGI LG764614945**
Comments: This Laboratory Grown Diamond was created by Chemical Vapor Deposition (CVD) growth process.
Indications of post-growth treatment.



January 27, 2026
IGI Report No. LG764614945
OLD EUROPEAN CUT
8.12 - 8.16 X 5.21 MM
2.36 CARATS
FANCY LIGHT PINK
VS 1
63.9%
52%
Thick to Very Thick (Faceted)
Large
EXCELLENT
EXCELLENT
SLIGHT
IGI LG764614945
Comments: This Laboratory Grown Diamond was created by Chemical Vapor Deposition (CVD) growth process.
Indications of post-growth treatment.