



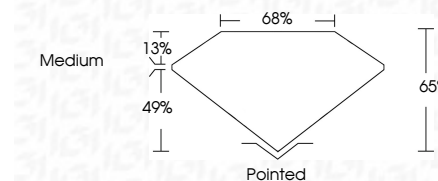
ELECTRONIC COPY

LG764611018
Report verification at igi.org



January 12, 2026
IGI Report Number **LG764611018**
Description **LABORATORY GROWN DIAMOND**
Shape and Cutting Style **PENTAGONAL STEP CUT**
Measurements **8.56 X 5.35 X 3.48 MM**

GRADING RESULTS
Carat Weight **1.04 CARAT**
Color Grade **F**
Clarity Grade **VS 1**



ADDITIONAL GRADING INFORMATION
Polish **VERY GOOD**
Symmetry **VERY GOOD**
Fluorescence **NONE**
Inscription(s) **IGI LG764611018**
Comments: This Laboratory Grown Diamond was created by Chemical Vapor Deposition (CVD) growth process. Type IIa



January 12, 2026
IGI Report No LG764611018
PENTAGONAL STEP CUT
8.56 X 5.35 X 3.48 MM
1.04 CARAT
F
VS 1
65%
65%
Medium
Pointed
Polish **VERY GOOD**
Symmetry **VERY GOOD**
Fluorescence **NONE**
Inscription(s) **IGI LG764611018**
Comments: This Laboratory Grown Diamond was created by Chemical Vapor Deposition (CVD) growth process. Type IIa

LABORATORY GROWN DIAMOND REPORT

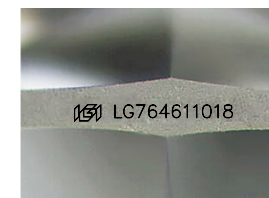
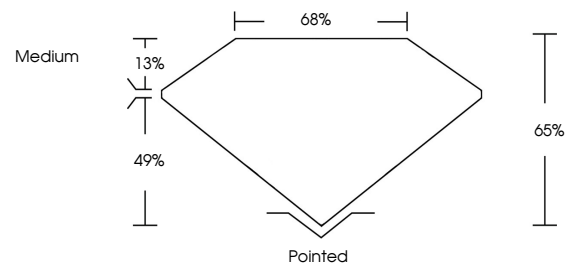
January 12, 2026
IGI Report Number **LG764611018**
Description **LABORATORY GROWN DIAMOND**
Shape and Cutting Style **PENTAGONAL STEP CUT**
Measurements **8.56 X 5.35 X 3.48 MM**

GRADING RESULTS
Carat Weight **1.04 CARAT**
Color Grade **F**
Clarity Grade **VS 1**

ADDITIONAL GRADING INFORMATION
Polish **VERY GOOD**
Symmetry **VERY GOOD**
Fluorescence **NONE**
Inscription(s) **IGI LG764611018**

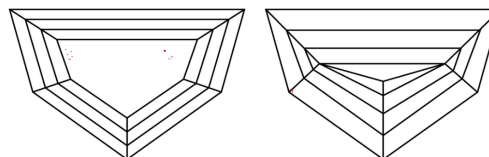
Comments: This Laboratory Grown Diamond was created by Chemical Vapor Deposition (CVD) growth process. Type IIa

PROPORTIONS



Sample Image Used

CLARITY CHARACTERISTICS



KEY TO SYMBOLS

Red symbols indicate internal characteristics.
Green symbols indicate external characteristics.

COLOR

D E F G H I J Faint Very Light Light

CLARITY

FL	IF	VS ¹⁻²	VS ¹⁻²	SI ¹⁻²	I ¹⁻³
Flawless	Internally Flawless	Very Very Slightly Included	Very Slightly Included	Slightly Included	Included

