



LABORATORY GROWN DIAMOND REPORT

February 6, 2026
 IGI Report Number **LG764610410**
 Description **LABORATORY GROWN DIAMOND**
 Shape and Cutting Style **TRAPEZE BRILLIANT CUT**
 Measurements **6.12 X 3.69 X 2.40 MM**

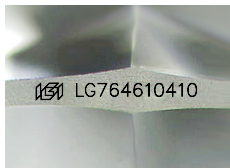
GRADING RESULTS

Carat Weight **0.46 CARAT**
 Color Grade **E**
 Clarity Grade **VS 1**

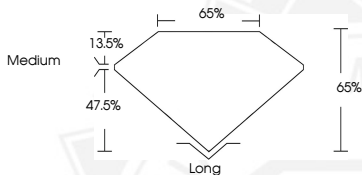
ADDITIONAL GRADING INFORMATION

Polish **VERY GOOD**
 Symmetry **VERY GOOD**
 Fluorescence **NONE**
 Inscription(s) **IGI LG764610410**

Comments: This Laboratory Grown Diamond was created by
 Chemical Vapor Deposition (CVD) growth process.
 Type IIa



Sample Image Used



February 6, 2026
 IGI Report Number **LG764610410**
TRAPEZE BRILLIANT CUT
LABORATORY GROWN DIAMOND
6.12 X 3.69 X 2.40 MM
 Carat Weight **0.46 CARAT**
 Color Grade **E**
 Clarity Grade **VS 1**
 Polish **VERY GOOD**
 Symmetry **VERY GOOD**
 Fluorescence **NONE**
 Inscription(s) **IGI LG764610410**

Comments: This Laboratory Grown
 Diamond was created by
 Chemical Vapor Deposition (CVD)
 growth process. Type IIa



February 6, 2026
 IGI Report Number **LG764610410**
TRAPEZE BRILLIANT CUT
LABORATORY GROWN DIAMOND
6.12 X 3.69 X 2.40 MM
 Carat Weight **0.46 CARAT**
 Color Grade **E**
 Clarity Grade **VS 1**
 Polish **VERY GOOD**
 Symmetry **VERY GOOD**
 Fluorescence **NONE**
 Inscription(s) **IGI LG764610410**

Comments: This Laboratory Grown
 Diamond was created by
 Chemical Vapor Deposition (CVD)
 growth process. Type IIa



THIS DOCUMENT WAS PRODUCED WITH THE FOLLOWING SECURITY MEASURES: SPECIAL DOCUMENT PAPER, INK SCREENS, WATERMARK, BACKGROUND DESIGNS, HOLOGRAM AND OTHER SECURITY FEATURES NOT LISTED AND DO EXCEED DOCUMENT SECURITY INDUSTRY GUIDELINES.