



# INTERNATIONAL GEMOLOGICAL INSTITUTE

ELECTRONIC COPY

## LABORATORY GROWN DIAMOND REPORT

February 4, 2026  
IGI Report Number **LG764610360**  
Description **LABORATORY GROWN DIAMOND**  
Shape and Cutting Style **ROUND BRILLIANT**  
Measurements **5.64 - 5.76 X 3.52 MM**

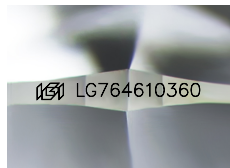
### GRADING RESULTS

Carat Weight **0.72 CARAT**  
Color Grade **G**  
Clarity Grade **SI 2**  
Cut Grade **EXCELLENT**

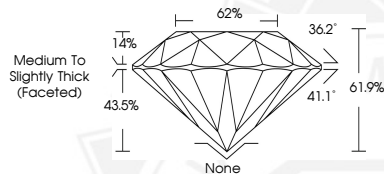
### ADDITIONAL GRADING INFORMATION

Polish **VERY GOOD**  
Symmetry **VERY GOOD**  
Fluorescence **NONE**  
Inscription(s) **IGI LG764610360**

Comments: As Grown - No indication of post-growth treatment. This Laboratory Grown Diamond was created by High Pressure High Temperature (HPHT) growth process. Type II



Sample Image Used



February 4, 2026  
IGI Report Number **LG764610360**  
**ROUND BRILLIANT**  
**LABORATORY GROWN DIAMOND**  
**5.64 - 5.76 X 3.52 MM**  
Carat Weight **0.72 CARAT**  
Color Grade **G**  
Clarity Grade **SI 2**  
Cut Grade **EXCELLENT**  
Polish **VERY GOOD**  
Symmetry **VERY GOOD**  
Fluorescence **NONE**  
Inscription(s) **IGI LG764610360**

Comments: As Grown - No indication of post-growth treatment. This Laboratory Grown Diamond was created by High Pressure High Temperature (HPHT) growth process. Type II



February 4, 2026  
IGI Report Number **LG764610360**  
**ROUND BRILLIANT**  
**LABORATORY GROWN DIAMOND**  
**5.64 - 5.76 X 3.52 MM**  
Carat Weight **0.72 CARAT**  
Color Grade **G**  
Clarity Grade **SI 2**  
Cut Grade **EXCELLENT**  
Polish **VERY GOOD**  
Symmetry **VERY GOOD**  
Fluorescence **NONE**  
Inscription(s) **IGI LG764610360**

Comments: As Grown - No indication of post-growth treatment. This Laboratory Grown Diamond was created by High Pressure High Temperature (HPHT) growth process. Type II



THIS DOCUMENT WAS PRODUCED WITH THE FOLLOWING SECURITY MEASURES: SPECIAL DOCUMENT PAPER, INK SCREENS, WATERMARK, BACKGROUND DESIGNS, HOLOGRAM AND OTHER SECURITY FEATURES NOT LISTED AND DO EXCEED DOCUMENT SECURITY INDUSTRY GUIDELINES.

For terms & conditions and to verify this report, please visit [www.igi.org](http://www.igi.org)