



January 31, 2026

IGI Report Number **LG764610043**

**ROUND BRILLIANT  
LABORATORY GROWN DIAMOND  
4.37 - 4.40 X 2.55 MM**

Carat Weight	<b>0.30 CARAT</b>
Color Grade	<b>D</b>
Clarity Grade	<b>SI 1</b>
Cut Grade	<b>VERY GOOD</b>
Polish	<b>GOOD</b>
Symmetry	<b>GOOD</b>
Fluorescence	<b>NONE</b>
Inscription(s)	<b>IGI LG764610043</b>

Comments: As Grown - No indication of post-growth treatment. This Laboratory Grown Diamond was created by High Pressure High Temperature (HPHT) growth process. Type II

**LABORATORY GROWN DIAMOND REPORT**

January 31, 2026

IGI Report Number

**LG764610043**

Description

**LABORATORY GROWN DIAMOND**

Shape and Cutting Style

**ROUND BRILLIANT**

Measurements

**4.37 - 4.40 X 2.55 MM**

**GRADING RESULTS**

Carat Weight

**0.30 CARAT**

Color Grade

**D**

Clarity Grade

**SI 1**

Cut Grade

**VERY GOOD**

**ADDITIONAL GRADING INFORMATION**

Polish

**GOOD**

Symmetry

**GOOD**

Fluorescence

**NONE**

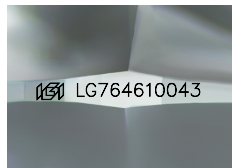
Inscription(s)

**IGI LG764610043**

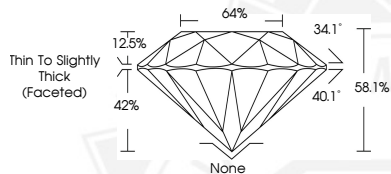
Comments: As Grown - No indication of post-growth treatment.

This Laboratory Grown Diamond was created by High Pressure High Temperature (HPHT) growth process.

Type II



Sample Image Used



January 31, 2026

IGI Report Number **LG764610043**

**ROUND BRILLIANT  
LABORATORY GROWN DIAMOND  
4.37 - 4.40 X 2.55 MM**

Carat Weight	<b>0.30 CARAT</b>
Color Grade	<b>D</b>
Clarity Grade	<b>SI 1</b>
Cut Grade	<b>VERY GOOD</b>
Polish	<b>GOOD</b>
Symmetry	<b>GOOD</b>
Fluorescence	<b>NONE</b>
Inscription(s)	<b>IGI LG764610043</b>

Comments: As Grown - No indication of post-growth treatment. This Laboratory Grown Diamond was created by High Pressure High Temperature (HPHT) growth process. Type II



THIS DOCUMENT WAS PRODUCED WITH THE FOLLOWING SECURITY MEASURES: SPECIAL DOCUMENT PAPER, INK SCREENS, WATERMARK BACKGROUND DESIGNS, HOLOGRAM AND OTHER SECURITY FEATURES NOT LISTED AND DO EXCEED DOCUMENT SECURITY INDUSTRY GUIDELINES.