



January 30, 2026

IGI Report Number **LG764609782**

**OVAL BRILLIANT  
LABORATORY GROWN DIAMOND  
6.04 X 4.52 X 2.92 MM**

Carat Weight	<b>0.53 CARAT</b>
Color Grade	<b>E</b>
Clarity Grade	<b>VVS 2</b>
Polish	<b>GOOD</b>
Symmetry	<b>GOOD</b>
Fluorescence	<b>NONE</b>
Inscription(s)	<b>IGI LG764609782</b>

Comments: As Grown - No indication of post-growth treatment. This Laboratory Grown Diamond was created by High Pressure High Temperature (HPHT) growth process. Type II

**LABORATORY GROWN DIAMOND REPORT**

January 30, 2026  
IGI Report Number **LG764609782**  
Description **LABORATORY GROWN DIAMOND**  
Shape and Cutting Style **OVAL BRILLIANT**  
Measurements **6.04 X 4.52 X 2.92 MM**

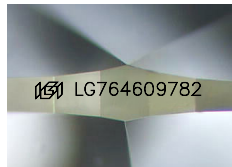
**GRADING RESULTS**

Carat Weight **0.53 CARAT**  
Color Grade **E**  
Clarity Grade **VVS 2**

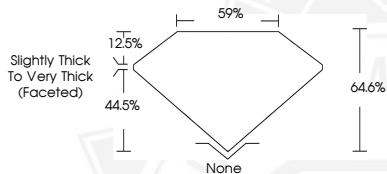
**ADDITIONAL GRADING INFORMATION**

Polish **GOOD**  
Symmetry **GOOD**  
Fluorescence **NONE**  
Inscription(s) **IGI LG764609782**

Comments: As Grown - No indication of post-growth treatment. This Laboratory Grown Diamond was created by High Pressure High Temperature (HPHT) growth process. Type II



Sample Image Used



January 30, 2026

IGI Report Number **LG764609782**

**OVAL BRILLIANT  
LABORATORY GROWN DIAMOND  
6.04 X 4.52 X 2.92 MM**

Carat Weight	<b>0.53 CARAT</b>
Color Grade	<b>E</b>
Clarity Grade	<b>VVS 2</b>
Polish	<b>GOOD</b>
Symmetry	<b>GOOD</b>
Fluorescence	<b>NONE</b>
Inscription(s)	<b>IGI LG764609782</b>

Comments: As Grown - No indication of post-growth treatment. This Laboratory Grown Diamond was created by High Pressure High Temperature (HPHT) growth process. Type II



THIS DOCUMENT WAS PRODUCED WITH THE FOLLOWING SECURITY MEASURES: SPECIAL DOCUMENT PAPER, INK SCREENS, WATERMARK, BACKGROUND DESIGNS, HOLOGRAM AND OTHER SECURITY FEATURES NOT LISTED AND DO EXCEED DOCUMENT SECURITY INDUSTRY GUIDELINES.