



January 29, 2026

IGI Report Number **LG764609013**

**ROUND BRILLIANT
LABORATORY GROWN DIAMOND
4.27 - 4.29 X 2.62 MM**

Carat Weight	0.29 CARAT
Color Grade	D
Clarity Grade	VS 1
Cut Grade	VERY GOOD
Polish	GOOD
Symmetry	EXCELLENT
Fluorescence	NONE
Inscription(s)	IGI LG764609013

Comments: This Laboratory Grown Diamond was created by Chemical Vapor Deposition (CVD) growth process. Type IIa

LABORATORY GROWN DIAMOND REPORT

January 29, 2026
IGI Report Number **LG764609013**
Description **LABORATORY GROWN DIAMOND**
Shape and Cutting Style **ROUND BRILLIANT**
Measurements **4.27 - 4.29 X 2.62 MM**

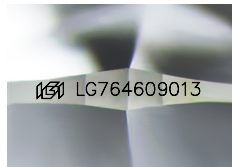
GRADING RESULTS

Carat Weight **0.29 CARAT**
Color Grade **D**
Clarity Grade **VS 1**
Cut Grade **VERY GOOD**

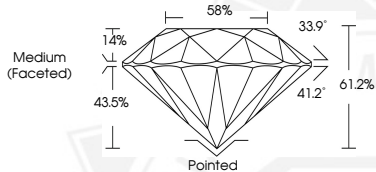
ADDITIONAL GRADING INFORMATION

Polish **GOOD**
Symmetry **EXCELLENT**
Fluorescence **NONE**
Inscription(s) **IGI LG764609013**

Comments: This Laboratory Grown Diamond was created by Chemical Vapor Deposition (CVD) growth process. Type IIa



Sample Image Used



January 29, 2026

IGI Report Number **LG764609013**

**ROUND BRILLIANT
LABORATORY GROWN DIAMOND
4.27 - 4.29 X 2.62 MM**

Carat Weight	0.29 CARAT
Color Grade	D
Clarity Grade	VS 1
Cut Grade	VERY GOOD
Polish	GOOD
Symmetry	EXCELLENT
Fluorescence	NONE
Inscription(s)	IGI LG764609013

Comments: This Laboratory Grown Diamond was created by Chemical Vapor Deposition (CVD) growth process. Type IIa



THIS DOCUMENT WAS PRODUCED WITH THE FOLLOWING SECURITY MEASURES: SPECIAL DOCUMENT PAPER, INK SCREENS, WATERMARK, BACKGROUND DESIGNS, HOLOGRAM AND OTHER SECURITY FEATURES NOT LISTED AND DO EXCEED DOCUMENT SECURITY INDUSTRY GUIDELINES.