



January 29, 2026

IGI Report Number **LG764608954**

**ROUND BRILLIANT
LABORATORY GROWN DIAMOND**
4.47 - 4.49 X 2.74 MM

Carat Weight	0.34 CARAT
Color Grade	D
Clarity Grade	VVS 2
Cut Grade	IDEAL
Polish	EXCELLENT
Symmetry	EXCELLENT
Fluorescence	NONE
Inscription(s)	IGI LG764608954

Comments: This Laboratory Grown Diamond was created by Chemical Vapor Deposition (CVD) growth process. Type IIa

LABORATORY GROWN DIAMOND REPORT

January 29, 2026

IGI Report Number

LG764608954

Description

LABORATORY GROWN DIAMOND

Shape and Cutting Style

ROUND BRILLIANT

Measurements

4.47 - 4.49 X 2.74 MM

GRADING RESULTS

Carat Weight

0.34 CARAT

Color Grade

D

Clarity Grade

VVS 2

Cut Grade

IDEAL

ADDITIONAL GRADING INFORMATION

Polish

EXCELLENT

Symmetry

EXCELLENT

Fluorescence

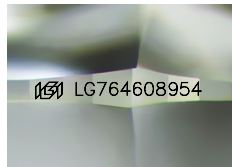
NONE

Inscription(s)

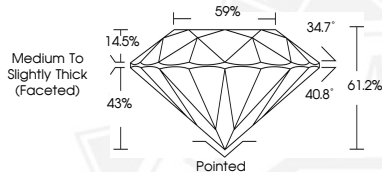
IGI LG764608954

Comments: This Laboratory Grown Diamond was created by Chemical Vapor Deposition (CVD) growth process.

Type IIa



Sample Image Used



January 29, 2026

IGI Report Number **LG764608954**

**ROUND BRILLIANT
LABORATORY GROWN DIAMOND**
4.47 - 4.49 X 2.74 MM

Carat Weight	0.34 CARAT
Color Grade	D
Clarity Grade	VVS 2
Cut Grade	IDEAL
Polish	EXCELLENT
Symmetry	EXCELLENT
Fluorescence	NONE
Inscription(s)	IGI LG764608954

Comments: This Laboratory Grown Diamond was created by Chemical Vapor Deposition (CVD) growth process. Type IIa



THIS DOCUMENT WAS PRODUCED WITH THE FOLLOWING SECURITY MEASURES: SPECIAL DOCUMENT PAPER, INK SCREENS, WATERMARK, BACKGROUND DESIGNS, HOLOGRAM AND OTHER SECURITY FEATURES NOT LISTED AND DO EXCEED DOCUMENT SECURITY INDUSTRY GUIDELINES.