



LABORATORY GROWN DIAMOND REPORT

January 29, 2026
 IGI Report Number **LG764608945**
 Description **LABORATORY GROWN DIAMOND**
 Shape and Cutting Style **ROUND BRILLIANT**
 Measurements **4.37 - 4.41 X 2.70 MM**

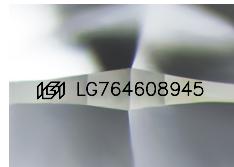
GRADING RESULTS

Carat Weight **0.32 CARAT**
 Color Grade **E**
 Clarity Grade **VS 2**
 Cut Grade **IDEAL**

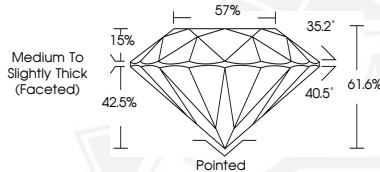
ADDITIONAL GRADING INFORMATION

Polish **EXCELLENT**
 Symmetry **EXCELLENT**
 Fluorescence **NONE**
 Inscription(s) **IGI LG764608945**

Comments: This Laboratory Grown Diamond was created by Chemical Vapor Deposition (CVD) growth process. Type IIa



Sample Image Used



January 29, 2026
 IGI Report Number **LG764608945**
ROUND BRILLIANT
LABORATORY GROWN DIAMOND
4.37 - 4.41 X 2.70 MM
 Carat Weight **0.32 CARAT**
 Color Grade **E**
 Clarity Grade **VS 2**
 Cut Grade **IDEAL**
 Polish **EXCELLENT**
 Symmetry **EXCELLENT**
 Fluorescence **NONE**
 Inscription(s) **IGI LG764608945**

Comments: This Laboratory Grown Diamond was created by Chemical Vapor Deposition (CVD) growth process. Type IIa



January 29, 2026
 IGI Report Number **LG764608945**
ROUND BRILLIANT
LABORATORY GROWN DIAMOND
4.37 - 4.41 X 2.70 MM
 Carat Weight **0.32 CARAT**
 Color Grade **E**
 Clarity Grade **VS 2**
 Cut Grade **IDEAL**
 Polish **EXCELLENT**
 Symmetry **EXCELLENT**
 Fluorescence **NONE**
 Inscription(s) **IGI LG764608945**

Comments: This Laboratory Grown Diamond was created by Chemical Vapor Deposition (CVD) growth process. Type IIa



THIS DOCUMENT WAS PRODUCED WITH THE FOLLOWING SECURITY MEASURES: SPECIAL DOCUMENT PAPER, INK SCREENS, WATERMARK, BACKGROUND DESIGNS, HOLOGRAM AND OTHER SECURITY FEATURES NOT LISTED AND DO EXCEED DOCUMENT SECURITY INDUSTRY GUIDELINES.