



**LABORATORY GROWN DIAMOND REPORT**

January 29, 2026  
 IGI Report Number **LG764608934**  
 Description **LABORATORY GROWN DIAMOND**  
 Shape and Cutting Style **ROUND BRILLIANT**  
 Measurements **4.50 - 4.53 X 2.80 MM**

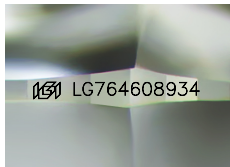
**GRADING RESULTS**

Carat Weight **0.35 CARAT**  
 Color Grade **E**  
 Clarity Grade **VVS 2**  
 Cut Grade **IDEAL**

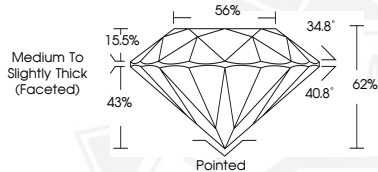
**ADDITIONAL GRADING INFORMATION**

Polish **EXCELLENT**  
 Symmetry **EXCELLENT**  
 Fluorescence **NONE**  
 Inscription(s) **IGI LG764608934**

Comments: This Laboratory Grown Diamond was created by  
 Chemical Vapor Deposition (CVD) growth process.  
 Type IIa



Sample Image Used



January 29, 2026  
 IGI Report Number **LG764608934**  
**ROUND BRILLIANT**  
**LABORATORY GROWN DIAMOND**  
**4.50 - 4.53 X 2.80 MM**  
 Carat Weight **0.35 CARAT**  
 Color Grade **E**  
 Clarity Grade **VVS 2**  
 Cut Grade **IDEAL**  
 Polish **EXCELLENT**  
 Symmetry **EXCELLENT**  
 Fluorescence **NONE**  
 Inscription(s) **IGI LG764608934**  
 Comments: This Laboratory Grown  
 Diamond was created by  
 Chemical Vapor Deposition (CVD)  
 growth process. Type IIa



January 29, 2026  
 IGI Report Number **LG764608934**  
**ROUND BRILLIANT**  
**LABORATORY GROWN DIAMOND**  
**4.50 - 4.53 X 2.80 MM**  
 Carat Weight **0.35 CARAT**  
 Color Grade **E**  
 Clarity Grade **VVS 2**  
 Cut Grade **IDEAL**  
 Polish **EXCELLENT**  
 Symmetry **EXCELLENT**  
 Fluorescence **NONE**  
 Inscription(s) **IGI LG764608934**  
 Comments: This Laboratory Grown  
 Diamond was created by  
 Chemical Vapor Deposition (CVD)  
 growth process. Type IIa

THIS DOCUMENT WAS PRODUCED WITH THE FOLLOWING SECURITY MEASURES: SPECIAL DOCUMENT PAPER, INK SCREENS, WATERMARK, BACKGROUND DESIGNS, HOLOGRAM AND OTHER SECURITY FEATURES NOT LISTED AND DO EXCEED DOCUMENT SECURITY INDUSTRY GUIDELINES.