



**LABORATORY GROWN DIAMOND REPORT**

January 10, 2026  
 IGI Report Number **LG763673551**  
 Description **LABORATORY GROWN DIAMOND**  
 Shape and Cutting Style **TRIANGULAR BRILLIANT**  
 Measurements **6.84 X 6.85 X 3.96 MM**

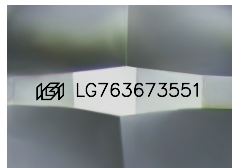
**GRADING RESULTS**

Carat Weight **0.97 CARAT**  
 Color Grade **E**  
 Clarity Grade **VS 1**

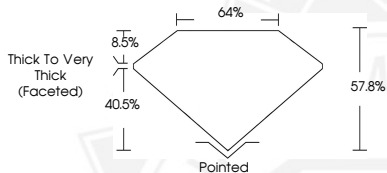
**ADDITIONAL GRADING INFORMATION**

Polish **EXCELLENT**  
 Symmetry **VERY GOOD**  
 Fluorescence **NONE**  
 Inscription(s) **IGI LG763673551**

Comments: This Laboratory Grown Diamond was created by Chemical Vapor Deposition (CVD) growth process. Type IIa



Sample Image Used



January 10, 2026  
 IGI Report Number **LG763673551**  
 TRIANGULAR BRILLIANT  
 LABORATORY GROWN DIAMOND  
**6.84 X 6.85 X 3.96 MM**  
 Carat Weight **0.97 CARAT**  
 Color Grade **E**  
 Clarity Grade **VS 1**  
 Polish **EXCELLENT**  
 Symmetry **VERY GOOD**  
 Fluorescence **NONE**  
 Inscription(s) **IGI LG763673551**

Comments: This Laboratory Grown Diamond was created by Chemical Vapor Deposition (CVD) growth process. Type IIa



January 10, 2026  
 IGI Report Number **LG763673551**  
 TRIANGULAR BRILLIANT  
 LABORATORY GROWN DIAMOND  
**6.84 X 6.85 X 3.96 MM**  
 Carat Weight **0.97 CARAT**  
 Color Grade **E**  
 Clarity Grade **VS 1**  
 Polish **EXCELLENT**  
 Symmetry **VERY GOOD**  
 Fluorescence **NONE**  
 Inscription(s) **IGI LG763673551**

Comments: This Laboratory Grown Diamond was created by Chemical Vapor Deposition (CVD) growth process. Type IIa



THIS DOCUMENT WAS PRODUCED WITH THE FOLLOWING SECURITY MEASURES: SPECIAL DOCUMENT PAPER, INK SCREENS, WATERMARK, BACKGROUND DESIGNS, HOLOGRAM AND OTHER SECURITY FEATURES NOT LISTED AND DO EXCEED DOCUMENT SECURITY INDUSTRY GUIDELINES.