



January 10, 2026  
**IGI Report Number** LG763673451  
**ROUND BRILLIANT**  
**LABORATORY GROWN DIAMOND**  
**4.84 - 4.87 X 2.95 MM**  
**0.43 CARAT**  
**D**  
**VVS 2**  
**IDEAL**  
**EXCELLENT**  
**VERY GOOD**  
**NONE**  
**Inscription(s)** IGI LG763673451

**LABORATORY GROWN DIAMOND REPORT**

January 10, 2026  
 IGI Report Number **LG763673451**  
 Description **LABORATORY GROWN DIAMOND**  
 Shape and Cutting Style **ROUND BRILLIANT**  
 Measurements **4.84 - 4.87 X 2.95 MM**

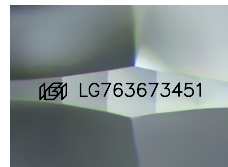
**GRADING RESULTS**

Carat Weight **0.43 CARAT**  
 Color Grade **D**  
 Clarity Grade **VVS 2**  
 Cut Grade **IDEAL**

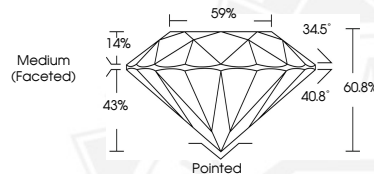
**ADDITIONAL GRADING INFORMATION**

Polish **EXCELLENT**  
 Symmetry **VERY GOOD**  
 Fluorescence **NONE**  
 Inscription(s) IGI LG763673451

Comments: This Laboratory Grown Diamond was created by Chemical Vapor Deposition (CVD) growth process. Type IIa



Sample Image Used



January 10, 2026  
**IGI Report Number** LG763673451  
**ROUND BRILLIANT**  
**LABORATORY GROWN DIAMOND**  
**4.84 - 4.87 X 2.95 MM**  
**0.43 CARAT**  
**D**  
**VVS 2**  
**IDEAL**  
**EXCELLENT**  
**VERY GOOD**  
**NONE**  
**Inscription(s)** IGI LG763673451

Comments: This Laboratory Grown Diamond was created by Chemical Vapor Deposition (CVD) growth process. Type IIa

THIS DOCUMENT WAS PRODUCED WITH THE FOLLOWING SECURITY MEASURES: SPECIAL DOCUMENT PAPER, INK SCREENS, WATERMARK, BACKGROUND DESIGNS, HOLOGRAM AND OTHER SECURITY FEATURES NOT LISTED AND DO EXCEED DOCUMENT SECURITY INDUSTRY GUIDELINES.