

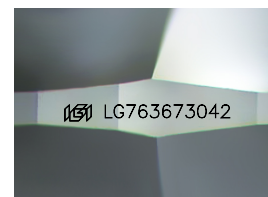
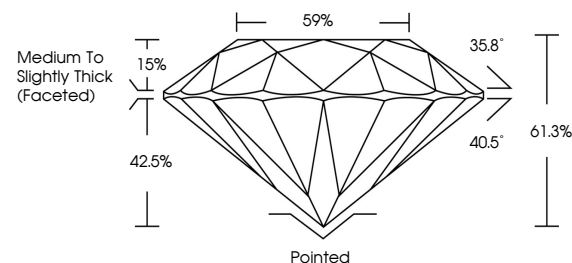


ELECTRONIC COPY

LABORATORY GROWN DIAMOND REPORT

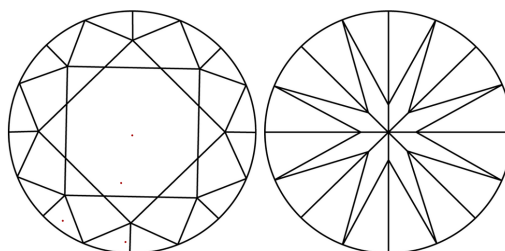
LG763673042
Report verification at igi.org

PROPORTIONS



Sample Image Used

CLARITY CHARACTERISTICS



KEY TO SYMBOLS

Red symbols indicate internal characteristics.
Green symbols indicate external characteristics.

COLOR

D E F G H I J Faint Very Light Light

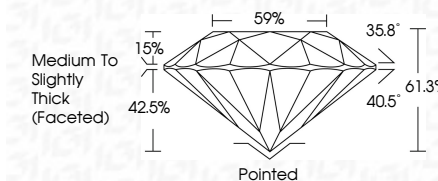
CLARITY

FL	IF	VVS ¹⁻²	VS ¹⁻²	SI ¹⁻²	I ¹⁻³
Flawless	Internally Flawless	Very Very Slightly Included	Very Slightly Included	Slightly Included	Included

LABORATORY GROWN DIAMOND REPORT



January 7, 2026	
IGI Report Number	LG763673042
Description	LABORATORY GROWN DIAMOND
Shape and Cutting Style	ROUND BRILLIANT
Measurements	8.21 - 8.27 X 5.06 MM
GRADING RESULTS	
Carat Weight	2.15 CARATS
Color Grade	D
Clarity Grade	VVS 2
Cut Grade	IDEAL



ADDITIONAL GRADING INFORMATION

Polish	EXCELLENT
Symmetry	EXCELLENT
Fluorescence	NONE
Inscription(s)	163 LG763673042
Comments: This Laboratory Grown Diamond was created by Chemical Vapor Deposition (CVD) growth process.	
Type IIa	



© IGI 2020, International Gemological Institute

FD - 10 20

www.igi.org



THIS DOCUMENT WAS PRODUCED WITH THE FOLLOWING SECURITY MEASURES: SPECIAL DOCUMENT PAPER, INK SCREENS, WATERMARK, BACKGROUND DESIGNS, HOLOGRAM AND OTHER SECURITY FEATURES NOT LISTED AND DO EXCEED DOCUMENT SECURITY INDUSTRY GUIDELINES

January 7, 2026
GI Report No LG763673042
ROUND BRILLIANT

2.15 CARATS	2.15 CARATS
D	D
VVS 2	VVS 2
IDP AL	IDP AL
61.9%	61.9%
59%	59%
Medium To Slightly Thick (Faceted)	Medium To Slightly Thick (Faceted)
Pointed	Pointed
EXCELLENT	EXCELLENT
EXCELLENT	EXCELLENT
NONE	NONE
4mm (27.49x18.00x4.00)	4mm (27.49x18.00x4.00)

Comments:
This Laboratory Grown Diamond was
created by Chemical Vapor Deposition
(CVD) growth process.