



ELECTRONIC COPY

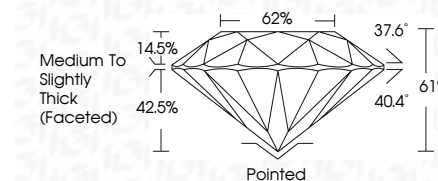
LG763668532
Report verification at igi.org



January 18, 2026
IGI Report Number **LG763668532**
Description **LABORATORY GROWN DIAMOND**
Shape and Cutting Style **ROUND BRILLIANT**
Measurements **6.94 - 7.00 X 4.26 MM**

GRADING RESULTS

Carat Weight **1.32 CARAT**
Color Grade **D**
Clarity Grade **VS 2**
Cut Grade **VERY GOOD**

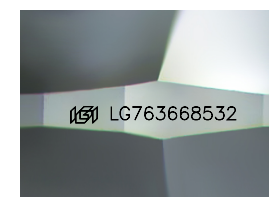


ADDITIONAL GRADING INFORMATION

Polish **VERY GOOD**
Symmetry **EXCELLENT**
Fluorescence **NONE**
Inscription(s) **IGI LG763668532**
Comments: As Grown - No indication of post-growth treatment.
This Laboratory Grown Diamond was created by High Pressure High Temperature (HPHT) growth process.
Type II

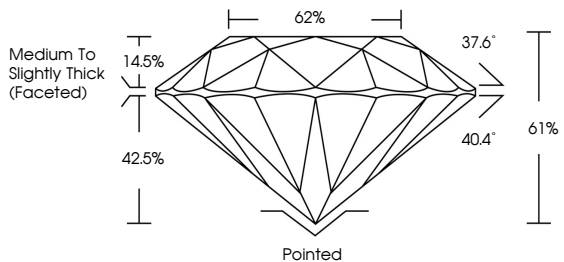


January 18, 2026
IGI Report No LG763668532
ROUND BRILLIANT
6.94 - 7.00 X 4.26 MM
1.32 CARAT
Color Grade **D**
Clarity Grade **VS 2**
Cut Grade **VERY GOOD**
Depth **61%**
Table **62%**
Girdle **Medium To Slightly Thick (Faceted)**
Culet **Pointed**
Polish **VERY GOOD**
Symmetry **EXCELLENT**
Fluorescence **NONE**
Inscriptions(s) **IGI LG763668532**
Comments: As Grown - No indication of post-growth treatment.
This Laboratory Grown Diamond was created by High Pressure High Temperature (HPHT) growth process.
Type II

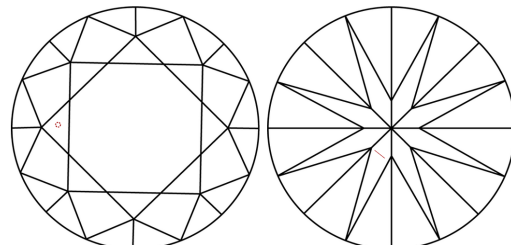


Sample Image Used

PROPORTIONS



CLARITY CHARACTERISTICS



KEY TO SYMBOLS

Red symbols indicate internal characteristics.
Green symbols indicate external characteristics.

COLOR

D E F G H I J Faint Very Light Light

CLARITY

FL	IF	VS ¹⁻²	VS ¹⁻²	SI ¹⁻²	I ¹⁻³
Flawless	Internally Flawless	Very Very Slightly Included	Very Slightly Included	Slightly Included	Included



January 18, 2026
IGI Report Number **LG763668532**
Description **LABORATORY GROWN DIAMOND**
Shape and Cutting Style **ROUND BRILLIANT**
Measurements **6.94 - 7.00 X 4.26 MM**

GRADING RESULTS

Carat Weight **1.32 CARAT**
Color Grade **D**
Clarity Grade **VS 2**
Cut Grade **VERY GOOD**

ADDITIONAL GRADING INFORMATION

Polish **VERY GOOD**
Symmetry **EXCELLENT**
Fluorescence **NONE**
Inscription(s) **IGI LG763668532**

Comments: As Grown - No indication of post-growth treatment.
This Laboratory Grown Diamond was created by High Pressure High Temperature (HPHT) growth process.
Type II