



**ELECTRONIC COPY**

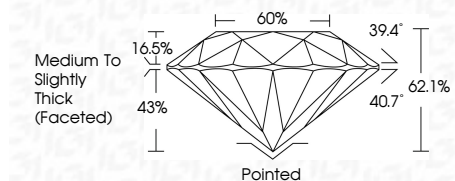
LG763668504  
Report verification at igi.org



January 10, 2026  
IGI Report Number **LG763668504**  
Description **LABORATORY GROWN DIAMOND**  
Shape and Cutting Style **ROUND BRILLIANT**  
Measurements **6.81 - 6.87 X 4.24 MM**

**GRADING RESULTS**

Carat Weight **1.24 CARAT**  
Color Grade **D**  
Clarity Grade **VVS 2**  
Cut Grade **GOOD**



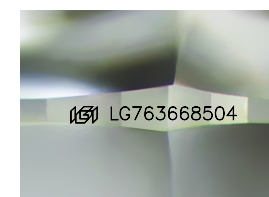
**ADDITIONAL GRADING INFORMATION**

Polish **VERY GOOD**  
Symmetry **VERY GOOD**  
Fluorescence **NONE**  
Inscription(s) **IGI LG763668504**  
Comments: As Grown - No indication of post-growth treatment.  
This Laboratory Grown Diamond was created by High Pressure High Temperature (HPHT) growth process.  
Type II



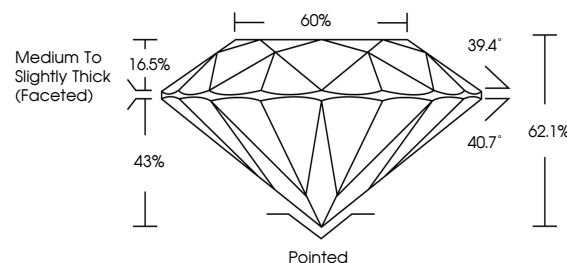
**IGI**

January 10, 2026  
IGI Report No LG763668504  
**ROUND BRILLIANT**  
6.81 - 6.87 X 4.24 MM  
1.24 CARAT  
Color Grade **D**  
Clarity Grade **VVS 2**  
Cut Grade **GOOD**  
Depth **62.1%**  
Table **60%**  
Girdle **Medium To Slightly Thick (Faceted)**  
Culet **Pointed**  
Polish **VERY GOOD**  
Symmetry **VERY GOOD**  
Fluorescence **NONE**  
Inscription(s) **IGI LG763668504**  
Comments: As Grown - No indication of post-growth treatment.  
This Laboratory Grown Diamond was created by High Pressure High Temperature (HPHT) growth process.  
Type II

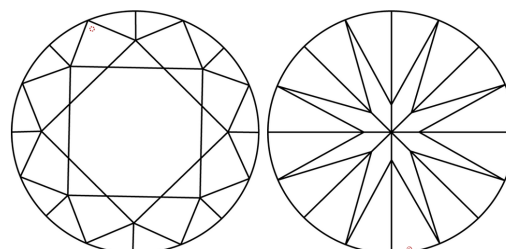


Sample Image Used

**PROPORTIONS**



**CLARITY CHARACTERISTICS**



**KEY TO SYMBOLS**

Red symbols indicate internal characteristics.  
Green symbols indicate external characteristics.

**COLOR**

D E F G H I J Faint Very Light Light

**CLARITY**

FL	IF	VVS <sup>1-2</sup>	VS <sup>1-2</sup>	SI <sup>1-2</sup>	I <sup>1-3</sup>
Flawless	Internally Flawless	Very Very Slightly Included	Very Slightly Included	Slightly Included	Included

